

SNAP23 Recombinant Matched Antibody Pair, PBS Only

Catalog Number:MP03062-1

Capture Antibody Information

Catalog Number:

87283-2-PBS

Host:

Rabbit

Isotype:

IgG

Purification Method:

Protein A purification

Clone ID:

252538C11

Reactivity:

human

Immunogen Catalog Number:

Eg6079

Conjugate:

Unconjugated

Full name:

synaptosomal-associated protein,
23kDa

Gene ID:

8773

Detection Antibody Information

Catalog Number:

87283-3-PBS

Host:

Rabbit

Isotype:

IgG

Purification Method:

Protein A purification

Clone ID:

252538A4

Reactivity:

human

GenBank:

NM_003825.4

Immunogen Catalog Number:

Eg6079

Conjugate:

Unconjugated

Full name:

synaptosomal-associated protein,
23kDa

Gene ID:

8773

Applications

Tested Applications:

Sandwich ELISA

Range:

78.1-5000 pg/mL (Sandwich ELISA)

Recommended Dilutions:

It is recommended that this reagent should be titrated in each testing system to obtain optimal results.

Product Information

MP03062-1 targets SNAP23 in immunoassays as a matched antibody pair. Validated in Sandwich ELISA.

Capture antibody: SNAP23 Recombinant monoclonal antibody, PBS Only (Capture) 87283-2-PBS (252538C11). 100 µg. Concentration 1 mg/mL.

Detection antibody: SNAP23 Recombinant monoclonal antibody, PBS Only (Detector) 87283-3-PBS (252538A4). 100 µg. Concentration 1 mg/mL.

Unconjugated rabbit recombinant monoclonal antibody pair in PBS only storage buffer at a concentration of 1 mg/mL, ready for conjugation. Created using Proteintech's proprietary in-house recombinant technology. Recombinant production enables unrivalled batch-to-batch consistency, easy scale-up, and future security of supply.

Matched antibody pairs are designed for use in a variety of assays and platforms that require matched antibody pairs.

Antibody use should be optimized for each application and assay.

Storage

Storage:

Store at -80°C.

Storage buffer:

PBS only

For technical support and original validation data for this product please contact:

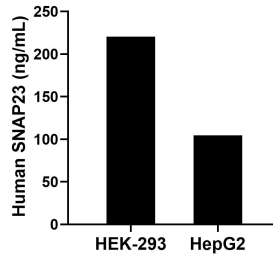
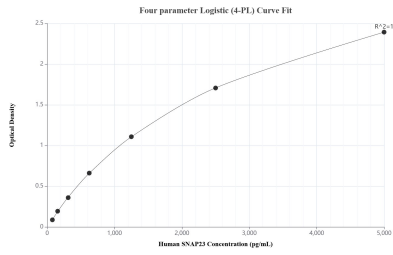
T: 1 (888) 4PTGLAB (1-888-478-4522) (toll free in USA), or 1(312) 455-8498 (outside USA)

E: proteintech@ptglab.com

W: ptglab.com

This product is exclusively available under Proteintech Group brand and is not available to purchase from any other manufacturer.

Selected Validation Data



Sandwich ELISA standard curve of MP03062-1, Human SNAP23 Recombinant Matched Antibody Pair - PBS only. 87283-2-PBS was coated to a plate as the capture antibody and incubated with serial dilutions of standard Eg6079. 87283-3-PBS was HRP conjugated as the detection antibody. Range: 78.1-5000 pg/mL

The mean SNAP23 concentration was determined to be 220.5 ng/mL in HEK-293 cell extract based on a 1.2 mg/mL extract load and 104.5 ng/mL in HepG2 cell extract based on a 1.2 mg/mL extract load.