

For Research Use Only

ABCA9 Recombinant Matched Antibody Pair, PBS Only



Catalog Number:MP03063-1

Capture Antibody Information

Catalog Number:
87588-2-PBS
Host:
Rabbit
Isotype:
IgG
Purification Method:
Protein A purification

Clone ID:
251601A7
Reactivity:
human
Immunogen Catalog Number:
Ag35032

Conjugate:
Unconjugated
Full name:
ATP-binding cassette, sub-family A (ABC1), member 9
Gene ID:
10350

Detection Antibody Information

Catalog Number:
87588-1-PBS
Host:
Rabbit
Isotype:
IgG
Purification Method:
Protein A purification

Clone ID:
251601E12
Reactivity:
human
GenBank:
BC167781
Immunogen Catalog Number:
Ag35032

Conjugate:
Unconjugated
Full name:
ATP-binding cassette, sub-family A (ABC1), member 9
Gene ID:
10350

Applications

Tested Applications:
Sandwich ELISA

Range:
0.781-50 ng/mL (Sandwich ELISA)

Recommended Dilutions:
It is recommended that this reagent should be titrated in each testing system to obtain optimal results.

Product Information

MP03063-1 targets ABCA9 in immunoassays as a matched antibody pair. Validated in Sandwich ELISA.

Capture antibody: ABCA9 Recombinant monoclonal antibody, PBS Only (Capture) 87588-2-PBS (251601A7). 100 µg. Concentration 1 mg/mL.

Detection antibody: ABCA9 Recombinant monoclonal antibody, PBS Only (Detector) 87588-1-PBS (251601E12). 100 µg. Concentration 1 mg/mL.

Unconjugated rabbit recombinant monoclonal antibody pair in PBS only storage buffer at a concentration of 1 mg/mL, ready for conjugation. Created using Proteintech's proprietary in-house recombinant technology. Recombinant production enables unrivalled batch-to-batch consistency, easy scale-up, and future security of supply.

Matched antibody pairs are designed for use in a variety of assays and platforms that require matched antibody pairs.

Antibody use should be optimized for each application and assay.

Storage

Storage:
Store at -80°C.
Storage buffer:
PBS only

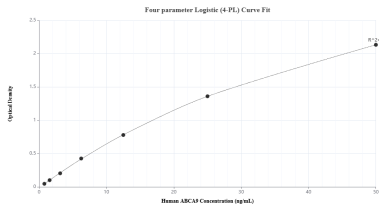
For technical support and original validation data for this product please contact:

T: 1 (888) 4PTGLAB (1-888-478-4522) (toll free in USA), or 1(312) 455-8498 (outside USA)

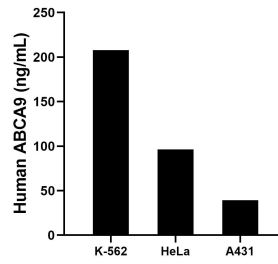
E: proteintech@ptglab.com
W: ptglab.com

This product is exclusively available under Proteintech Group brand and is not available to purchase from any other manufacturer.

Selected Validation Data



Sandwich ELISA standard curve of MP03063-1, Human ABCA9 Recombinant Matched Antibody Pair - PBS only. 87588-2-PBS was coated to a plate as the capture antibody and incubated with serial dilutions of standard Ag35032. 87588-1-PBS was HRP conjugated as the detection antibody. Range: 0.781-50 ng/mL



The mean ABCA9 concentration was determined to be 207.82 ng/mL in K-562 cell extract based on a 1.2 mg/mL extract load, 96.51 ng/mL in HeLa cell extract based on a 1.2 mg/mL extract load and 39.57 ng/mL in A431 cell extract based on a 1.2 mg/mL extract load.