

For Research Use Only

Mouse Ly-6A/E (Sca-1) Recombinant Matched Antibody Pair, PBS Only



Catalog Number:MP03064-1

Capture Antibody Information

Catalog Number:
87403-3-PBS
Host:
Rabbit
Isotype:
IgG
Purification Method:
Protein A purification

Clone ID:
252494D1
Reactivity:
mouse
Immunogen Catalog Number:
Eg4270

Conjugate:
Unconjugated
Full name:
lymphocyte antigen 6 complex, locus A
Gene ID:
110454

Detection Antibody Information

Catalog Number:
87403-2-PBS
Host:
Rabbit
Isotype:
IgG
Purification Method:
Protein A purification

Clone ID:
252494A2
Reactivity:
mouse
GenBank:
NM_001271416.1
Immunogen Catalog Number:
Eg4270

Conjugate:
Unconjugated
Full name:
lymphocyte antigen 6 complex, locus A
Gene ID:
110454

Applications

Tested Applications:
Sandwich ELISA

Range:
0.313-20 ng/mL (Sandwich ELISA)

Recommended Dilutions:
It is recommended that this reagent should be titrated in each testing system to obtain optimal results.

Product Information

MP03064-1 targets Ly-6A/E (Sca-1) in immunoassays as a matched antibody pair. Validated in Sandwich ELISA.

Capture antibody: Mouse Ly-6A/E (Sca-1) Recombinant monoclonal antibody, PBS Only (Capture) 87403-3-PBS (252494D1). 100 µg. Concentration 1 mg/mL.

Detection antibody: Mouse Ly-6A/E (Sca-1) Recombinant monoclonal antibody, PBS Only (Detector) 87403-2-PBS (252494A2). 100 µg. Concentration 1 mg/mL.

Unconjugated rabbit recombinant monoclonal antibody pair in PBS only storage buffer at a concentration of 1 mg/mL, ready for conjugation. Created using Proteintech's proprietary in-house recombinant technology. Recombinant production enables unrivalled batch-to-batch consistency, easy scale-up, and future security of supply.

Matched antibody pairs are designed for use in a variety of assays and platforms that require matched antibody pairs.

Antibody use should be optimized for each application and assay.

Storage

Storage:
Store at -80°C.
Storage buffer:
PBS only

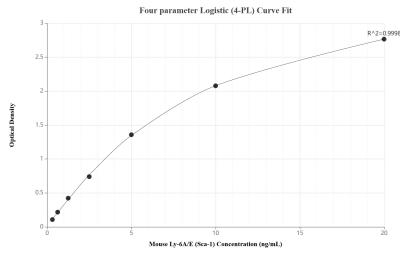
For technical support and original validation data for this product please contact:

T: 1 (888) 4PTGLAB (1-888-478-4522) (toll free in USA), or 1(312) 455-8498 (outside USA)

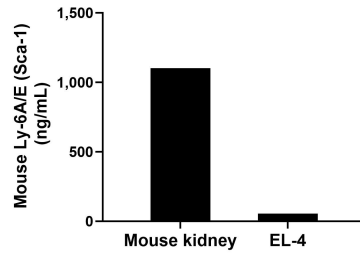
E: proteintech@ptglab.com
W: ptglab.com

This product is exclusively available under Proteintech Group brand and is not available to purchase from any other manufacturer.

Selected Validation Data



Sandwich ELISA standard curve of MP03064-1, Mouse Ly-6A/E (Sca-1) Recombinant Matched Antibody Pair - PBS only. 87403-3-PBS was coated to a plate as the capture antibody and incubated with serial dilutions of standard Eg4270. 87403-2-PBS was HRP conjugated as the detection antibody. Range: 0.313-20 ng/mL



The mean Ly-6A/E (Sca-1) concentration was determined to be 1,101.47 ng/mL in mouse kidney extract based on a 8.40 mg/mL extract load and 54.43 ng/mL in EL-4 cell extract based on a 3.70 mg/mL extract load.