

For Research Use Only

Mouse IL-15 Recombinant Matched Antibody Pair, PBS Only



Catalog Number:MP03066-1

Capture Antibody Information

Catalog Number:

82862-8-PBS

Host:

Rabbit

Isotype:

IgG

Purification Method:

Protein A purification

Clone ID:

251309C3

Reactivity:

mouse

Immunogen Catalog Number:

Eg2179

Conjugate:

Unconjugated

Full name:

interleukin 15

Gene ID:

16168

Detection Antibody Information

Catalog Number:

82862-7-PBS

Host:

Rabbit

Isotype:

IgG

Purification Method:

Protein A purification

Clone ID:

251309C1

Reactivity:

mouse

GenBank:

NM_001254747

Immunogen Catalog Number:

Eg2179

Conjugate:

Unconjugated

Full name:

interleukin 15

Gene ID:

16168

Applications

Tested Applications:

Sandwich ELISA

Range:

97.7-6250 pg/mL (Sandwich ELISA)

Recommended Dilutions:

It is recommended that this reagent should be titrated in each testing system to obtain optimal results.

Product Information

MP03066-1 targets IL-15 in immunoassays as a matched antibody pair. Validated in Sandwich ELISA.

Capture antibody: Mouse IL-15 Recombinant monoclonal antibody, PBS Only (Capture) 82862-8-PBS (251309C3). 100 µg. Concentration 1 mg/mL.

Detection antibody: Mouse IL-15 Recombinant monoclonal antibody, PBS Only (Detector) 82862-7-PBS (251309C1). 100 µg. Concentration 1 mg/mL.

Unconjugated rabbit recombinant monoclonal antibody pair in PBS only storage buffer at a concentration of 1 mg/mL, ready for conjugation. Created using Proteintech's proprietary in-house recombinant technology. Recombinant production enables unrivalled batch-to-batch consistency, easy scale-up, and future security of supply.

Matched antibody pairs are designed for use in a variety of assays and platforms that require matched antibody pairs.

Antibody use should be optimized for each application and assay.

Storage

Storage:

Store at -80°C.

Storage buffer:

PBS only

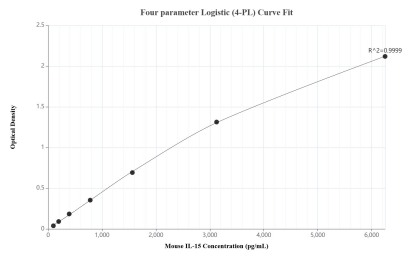
For technical support and original validation data for this product please contact:

T: 1 (888) 4PTGLAB (1-888-478-4522) (toll free in USA), or 1(312) 455-8498 (outside USA)

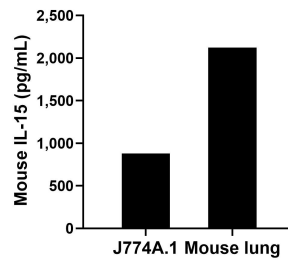
E: proteintech@ptglab.com
W: ptglab.com

This product is exclusively available under Proteintech Group brand and is not available to purchase from any other manufacturer.

Selected Validation Data



Sandwich ELISA standard curve of MP03066-1, IL-15 Recombinant Matched Antibody Pair - PBS only. 82862-8-PBS was coated to a plate as the capture antibody and incubated with serial dilutions of standard Eg2179. 82862-7-PBS was biotinylated as the detection antibody. Range: 97.7-6250 pg/mL



The mean IL-15 concentration was determined to be 878.90 pg/mL in J774A.1 cell extract based on a 1.2 mg/mL extract load and 2,122.0 pg/mL in mouse lung extract based on a 4.8 mg/mL extract load.