

For Research Use Only

# Mouse PTPRD Recombinant Matched Antibody Pair, PBS Only



Catalog Number:MP03070-1

## Capture Antibody Information

**Catalog Number:**  
87472-4-PBS  
**Host:**  
Rabbit  
**Isotype:**  
IgG  
**Purification Method:**  
Protein A purification

**Clone ID:**  
252819C7  
**Reactivity:**  
mouse  
**Immunogen Catalog Number:**  
Eg6916

**Conjugate:**  
Unconjugated  
**Full name:**  
protein tyrosine phosphatase, receptor type, D  
**Gene ID:**  
19266

## Detection Antibody Information

**Catalog Number:**  
87472-3-PBS  
**Host:**  
Rabbit  
**Isotype:**  
IgG  
**Purification Method:**  
Protein A purification

**Clone ID:**  
252819H1  
**Reactivity:**  
mouse  
**GenBank:**  
/  
**Immunogen Catalog Number:**  
Eg6916

**Conjugate:**  
Unconjugated  
**Full name:**  
protein tyrosine phosphatase, receptor type, D  
**Gene ID:**  
19266

## Applications

**Tested Applications:**  
Cytometric bead array

**Range:**  
0.781-50 ng/mL (Cytometric Bead Array)

**Recommended Dilutions:**  
It is recommended that this reagent should be titrated in each testing system to obtain optimal results.

## Product Information

MP03070-1 targets PTPRD in immunoassays as a matched antibody pair. Validated in Cytometric bead array.

Capture antibody: Mouse PTPRD Recombinant monoclonal antibody, PBS Only (Capture) 87472-4-PBS (252819C7). 100 µg. Concentration 1 mg/mL.

Detection antibody: Mouse PTPRD Recombinant monoclonal antibody, PBS Only (Detector) 87472-3-PBS (252819H1). 100 µg. Concentration 1 mg/mL.

Unconjugated rabbit recombinant monoclonal antibody pair in PBS only storage buffer at a concentration of 1 mg/mL, ready for conjugation. Created using Proteintech's proprietary in-house recombinant technology. Recombinant production enables unrivalled batch-to-batch consistency, easy scale-up, and future security of supply.

Matched antibody pairs are designed for use in a variety of assays and platforms that require matched antibody pairs.

Antibody use should be optimized for each application and assay.

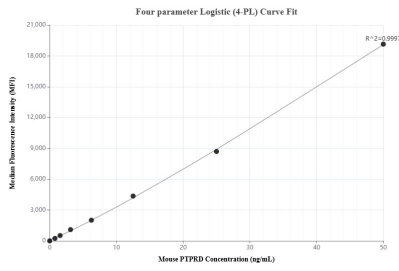
## Storage

**Storage:**  
Store at -80°C.  
**Storage buffer:**  
PBS only

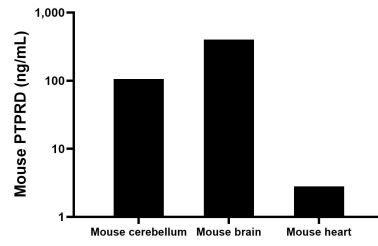
For technical support and original validation data for this product please contact:  
T: 1 (888) 4PTGLAB (1-888-478-4522) (toll free in USA), or 1(312) 455-8498 (outside USA)      E: proteintech@ptglab.com  
W: ptglab.com

This product is exclusively available under Proteintech Group brand and is not available to purchase from any other manufacturer.

## Selected Validation Data



Cytometric bead array standard curve of MP03070-1, MOUSE PTPRD Recombinant Matched Antibody Pair, PBS Only. Capture antibody: 87472-4-PBS. Detection antibody: 87472-3-PBS. Standard: Eg6916. Range: 0.781-50 ng/mL



The mean PTPRD concentration was determined to be 105.6 ng/mL in mouse cerebellum tissue extract based on a 6.0 mg/mL extract load, 402.8 ng/mL in mouse brain tissue extract based on a 3.2 mg/mL extract load, 2.8 ng/mL in mouse heart tissue extract based on a 5.4 mg/mL extract load.