

For Research Use Only

# Rat CXCL16 Recombinant Matched Antibody Pair, PBS Only



Catalog Number:MP03078-1

## Capture Antibody Information

Catalog Number:  
87605-2-PBS

Host:  
Rabbit

Isotype:  
IgG

Purification Method:  
Protein A purification

Clone ID:  
252531G2

Reactivity:  
rat

Immunogen Catalog Number:  
Eg6251

Conjugate:  
Unconjugated

Full name:  
chemokine (C-X-C motif) ligand 16

Gene ID:  
497942

## Detection Antibody Information

Catalog Number:  
87605-1-PBS

Host:  
Rabbit

Isotype:  
IgG

Purification Method:  
Protein A purification

Clone ID:  
252531D1

Reactivity:  
rat

GenBank:  
NM\_001017478.1

Immunogen Catalog Number:  
Eg6251

Conjugate:  
Unconjugated

Full name:  
chemokine (C-X-C motif) ligand 16

Gene ID:  
497942

## Applications

Tested Applications:  
Cytometric bead array

Range:  
0.078-10 ng/mL (Cytometric Bead Array)

Recommended Dilutions:  
It is recommended that this reagent should be titrated in each testing system to obtain optimal results.

## Product Information

MP03078-1 targets CXCL16 in immunoassays as a matched antibody pair. Validated in Cytometric bead array.

Capture antibody: Rat CXCL16 Recombinant monoclonal antibody, PBS Only (Capture) 87605-2-PBS (252531G2). 100 µg. Concentration 1 mg/mL.

Detection antibody: Rat CXCL16 Recombinant monoclonal antibody, PBS Only (Detector) 87605-1-PBS (252531D1). 100 µg. Concentration 1 mg/mL.

Unconjugated rabbit recombinant monoclonal antibody pair in PBS only storage buffer at a concentration of 1 mg/mL, ready for conjugation. Created using Proteintech's proprietary in-house recombinant technology. Recombinant production enables unrivalled batch-to-batch consistency, easy scale-up, and future security of supply.

Matched antibody pairs are designed for use in a variety of assays and platforms that require matched antibody pairs.

Antibody use should be optimized for each application and assay.

## Storage

Storage:  
Store at -80°C.  
Storage buffer:  
PBS only

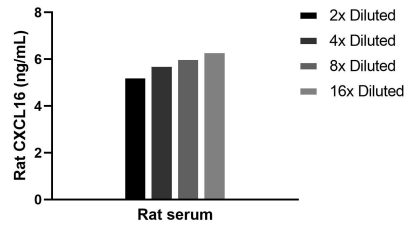
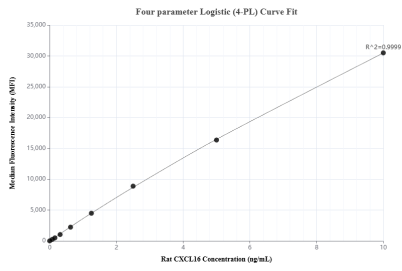
For technical support and original validation data for this product please contact:

T: 1 (888) 4PTGLAB (1-888-478-4522) (toll free in USA), or 1(312) 455-8498 (outside USA)

E: [proteintech@ptglab.com](mailto:proteintech@ptglab.com)  
W: [ptglab.com](http://ptglab.com)

**This product is exclusively available under Proteintech Group brand and is not available to purchase from any other manufacturer.**

## Selected Validation Data



Cytometric bead array standard curve of MP03078-1, RAT CXCL16 Recombinant Matched Antibody Pair, PBS Only. Capture antibody: 87605-2-PBS. Detection antibody: 87605-1-PBS. Standard: Eg6251. Range: 0.078-10 ng/mL.

The mean CXCL16 concentration was determined to be 5.9 ng/mL in rat serum.