

For Research Use Only

IgA2 Recombinant Matched Antibody Pair, PBS Only



Catalog Number:MP03081-1

Capture Antibody Information

Catalog Number:
87533-3-PBS
Host:
Rabbit
Isotype:
IgG
Purification Method:
Protein A purification

Clone ID:
252588B10
Reactivity:
human
Immunogen Catalog Number:
Eg9191

Conjugate:
Unconjugated
Full name:
immunoglobulin heavy constant alpha 2 (A2m marker)
Gene ID:
3494

Detection Antibody Information

Catalog Number:
87533-2-PBS
Host:
Rabbit
Isotype:
IgG
Purification Method:
Protein A purification

Clone ID:
252588H8
Reactivity:
human
GenBank:
Immunogen Catalog Number:
Eg9191

Conjugate:
Unconjugated
Full name:
immunoglobulin heavy constant alpha 2 (A2m marker)
Gene ID:
3494

Applications

Tested Applications:
Cytometric bead array

Range:
0.625-80 ng/mL (Cytometric Bead Array)

Recommended Dilutions:
It is recommended that this reagent should be titrated in each testing system to obtain optimal results.

Product Information

MP03081-1 targets IgA2 in immunoassays as a matched antibody pair. Validated in Cytometric bead array.
Capture antibody: Human IgA2 Recombinant monoclonal antibody, PBS Only (Capture) 87533-3-PBS (252588B10). 100 µg. Concentration 1 mg/mL.
Detection antibody: Human IgA2 Recombinant monoclonal antibody, PBS Only (Detector) 87533-2-PBS (252588H8). 100 µg. Concentration 1 mg/mL.
Unconjugated rabbit recombinant monoclonal antibody pair in PBS only storage buffer at a concentration of 1 mg/mL, ready for conjugation. Created using Proteintech's proprietary in-house recombinant technology. Recombinant production enables unrivalled batch-to-batch consistency, easy scale-up, and future security of supply.
Matched antibody pairs are designed for use in a variety of assays and platforms that require matched antibody pairs.
Antibody use should be optimized for each application and assay.

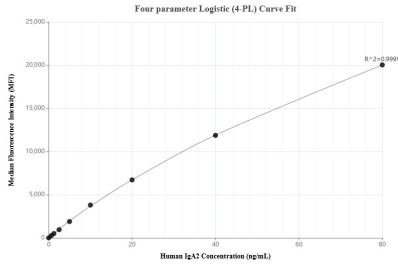
Storage

Storage:
Store at -80°C.
Storage buffer:
PBS only

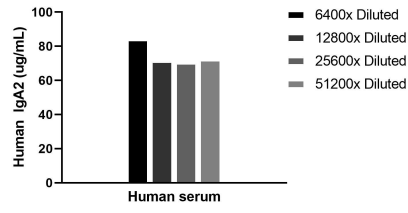
For technical support and original validation data for this product please contact:
T: 1 (888) 4PTGLAB (1-888-478-4522) (toll free in USA), or 1(312) 455-8498 (outside USA) E: proteintech@ptglab.com W: ptglab.com

This product is exclusively available under Proteintech Group brand and is not available to purchase from any other manufacturer.

Selected Validation Data



Cytometric bead array standard curve of MP03081-1, IgA2 Recombinant Matched Antibody Pair, PBS Only. Capture antibody: 87533-3-PBS. Detection antibody: 87533-2-PBS. Standard: Eg9191. Range: 0.625-80 ng/mL



The mean IgA2 concentration was determined to be 74.36 ug/mL in human serum.