

For Research Use Only

# EPHA2 Recombinant Matched Antibody Pair, PBS Only



Catalog Number:MP03086-1

## Capture Antibody Information

Catalog Number:  
87562-3-PBS

Host:  
Rabbit

Isotype:  
IgG

Purification Method:  
Protein A purification

Clone ID:  
252900A10

Reactivity:  
human

Immunogen Catalog Number:  
Eg0146

Conjugate:  
Unconjugated

Full name:  
EPH receptor A2

Gene ID:  
1969

## Detection Antibody Information

Catalog Number:  
87562-2-PBS

Host:  
Rabbit

Isotype:  
IgG

Purification Method:  
Protein A purification

Clone ID:  
252900G3

Reactivity:  
human

GenBank:  
BC037166

Immunogen Catalog Number:  
Eg0146

Conjugate:  
Unconjugated

Full name:  
EPH receptor A2

Gene ID:  
1969

## Applications

Tested Applications:  
Cytometric bead array, Sandwich ELISA

Range:  
0.156-20 ng/mL (Cytometric Bead Array)  
78.1-2500 pg/mL (Sandwich ELISA)

Recommended Dilutions:  
It is recommended that this reagent should be titrated in each testing system to obtain optimal results.

## Product Information

MP03086-1 targets EPHA2 in immunoassays as a matched antibody pair. Validated in Cytometric bead array, Sandwich ELISA.

Capture antibody: EPHA2 Recombinant monoclonal antibody, PBS Only (Capture) 87562-3-PBS (252900A10). 100 µg. Concentration 1 mg/mL.

Detection antibody: EPHA2 Recombinant monoclonal antibody, PBS Only (Detector) 87562-2-PBS (252900G3). 100 µg. Concentration 1 mg/mL.

Unconjugated rabbit recombinant monoclonal antibody pair in PBS only storage buffer at a concentration of 1 mg/mL, ready for conjugation. Created using Proteintech's proprietary in-house recombinant technology. Recombinant production enables unrivalled batch-to-batch consistency, easy scale-up, and future security of supply.

Matched antibody pairs are designed for use in a variety of assays and platforms that require matched antibody pairs.

Antibody use should be optimized for each application and assay.

## Storage

Storage:  
Store at -80°C.  
Storage buffer:  
PBS only

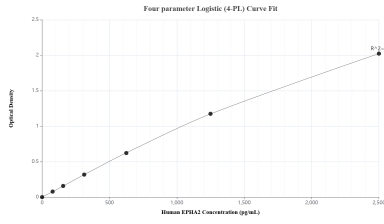
For technical support and original validation data for this product please contact:

T: 1 (888) 4PTGLAB (1-888-478-4522) (toll free in USA), or 1(312) 455-8498 (outside USA)

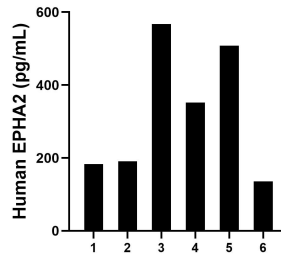
E: [proteintech@ptglab.com](mailto:proteintech@ptglab.com)  
W: [ptglab.com](http://ptglab.com)

This product is exclusively available under Proteintech Group brand and is not available to purchase from any other manufacturer.

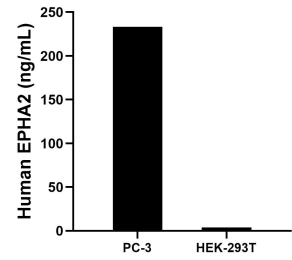
## Selected Validation Data



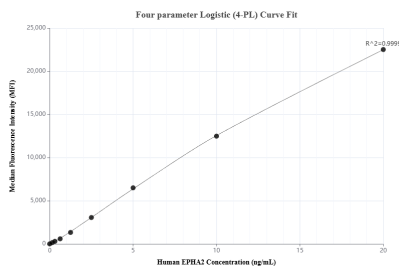
Sandwich ELISA standard curve of MP03086-1, Human EPHA2 Recombinant Matched Antibody Pair - PBS only. 87562-3-PBS was coated to a plate as the capture antibody and incubated with serial dilutions of standard Eg0146. 87562-2-PBS was HRP conjugated as the detection antibody. Range: 78.1-2500 pg/mL



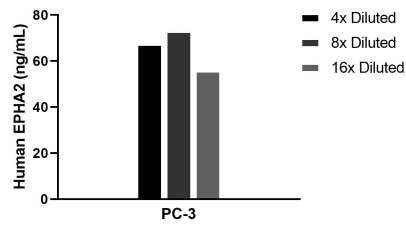
Plasma of six individual healthy human donors was measured. The EPHA2 concentration of detected samples was determined to be 322.9 pg/mL with a range of 135.9-567.2 pg/mL.



The mean EPHA2 concentration was determined to be 233.1 ng/mL in PC-3 cell extract based on a 1.5 mg/mL extract load and 4.0 ng/mL in HEK-293T cell extract based on a 1.2 mg/mL extract load.



Cytometric bead array standard curve of MP03086-1, EPHA2 Recombinant Matched Antibody Pair, PBS Only. Capture antibody: 87562-3-PBS. Detection antibody: 87562-2-PBS. Standard: Eg0146. Range: 0.156-20 ng/mL



The mean EPHA2 concentration was determined to be 65.4 ng/mL in PC-3 cell extract based on a 1.2 mg/mL extract load.