

For Research Use Only

EN1 Recombinant Matched Antibody Pair, PBS Only



Catalog Number:MP03088-1

Capture Antibody Information

Catalog Number:
87609-2-PBS

Host:
Rabbit

Isotype:
IgG

Purification Method:
Protein A purification

Clone ID:
252831H2

Reactivity:
human

Immunogen Catalog Number:
Ag26688

Conjugate:
Unconjugated

Full name:
engrailed homeobox 1

Gene ID:
2019

Detection Antibody Information

Catalog Number:
87609-1-PBS

Host:
Rabbit

Isotype:
IgG

Purification Method:
Protein A purification

Clone ID:
252831E11

Reactivity:
human

GenBank:
NM_001426

Immunogen Catalog Number:
Ag26688

Conjugate:
Unconjugated

Full name:
engrailed homeobox 1

Gene ID:
2019

Applications

Tested Applications:
Sandwich ELISA

Range:
78.1-5000 pg/mL (Sandwich ELISA)

Recommended Dilutions:
It is recommended that this reagent should be titrated in each testing system to obtain optimal results.

Product Information

MP03088-1 targets EN1 in immunoassays as a matched antibody pair. Validated in Sandwich ELISA.

Capture antibody: EN1 Recombinant monoclonal antibody, PBS Only (Capture) 87609-2-PBS (252831H2). 100 µg. Concentration 1 mg/mL.

Detection antibody: EN1 Recombinant monoclonal antibody, PBS Only (Detector) 87609-1-PBS (252831E11). 100 µg. Concentration 1 mg/mL.

Unconjugated rabbit recombinant monoclonal antibody pair in PBS only storage buffer at a concentration of 1 mg/mL, ready for conjugation. Created using Proteintech's proprietary in-house recombinant technology. Recombinant production enables unrivalled batch-to-batch consistency, easy scale-up, and future security of supply.

Matched antibody pairs are designed for use in a variety of assays and platforms that require matched antibody pairs.

Antibody use should be optimized for each application and assay.

Storage

Storage:
Store at -80°C.
Storage buffer:
PBS only

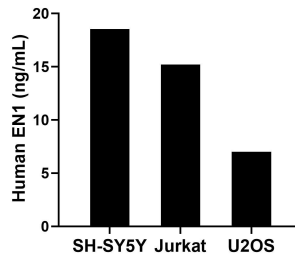
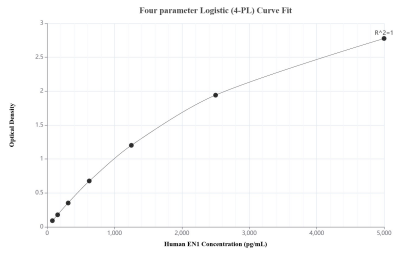
For technical support and original validation data for this product please contact:

T: 1 (888) 4PTGLAB (1-888-478-4522) (toll free in USA), or 1(312) 455-8498 (outside USA)

E: proteintech@ptglab.com
W: ptglab.com

This product is exclusively available under Proteintech Group brand and is not available to purchase from any other manufacturer.

Selected Validation Data



Sandwich ELISA standard curve of MP03088-1, Human EN1 Recombinant Matched Antibody Pair - PBS only. 87609-2-PBS was coated to a plate as the capture antibody and incubated with serial dilutions of standard Ag26688. 87609-1-PBS was HRP conjugated as the detection antibody. Range: 78.1-5000 pg/mL

The mean EN1 concentration was determined to be 18.5 ng/mL in SH-SY5Y cell extract based on a 1.2 mg/mL extract load, 15.2 ng/mL in Jurkat cell extract based on a 1.2 mg/mL extract load and 7.0 ng/mL in U2OS cell extract based on a 1.2 mg/mL extract load.