

For Research Use Only

CDHR5 Recombinant Matched Antibody Pair, PBS Only



Catalog Number:MP03089-1

Capture Antibody Information

Catalog Number:

87608-2-PBS

Host:

Rabbit

Isotype:

IgG

Purification Method:

Protein A purification

Clone ID:

252533D12

Reactivity:

human

Immunogen Catalog Number:

Eg5775

Conjugate:

Unconjugated

Full name:

mucin-like protocadherin

Gene ID:

53841

Detection Antibody Information

Catalog Number:

87608-1-PBS

Host:

Rabbit

Isotype:

IgG

Purification Method:

Protein A purification

Clone ID:

252533F4

Reactivity:

human

GenBank:

NM_021924.5

Immunogen Catalog Number:

Eg5775

Conjugate:

Unconjugated

Full name:

mucin-like protocadherin

Gene ID:

53841

Applications

Tested Applications:

Sandwich ELISA

Range:

39.1-2500 pg/mL (Sandwich ELISA)

Recommended Dilutions:

It is recommended that this reagent should be titrated in each testing system to obtain optimal results.

Product Information

MP03089-1 targets CDHR5 in immunoassays as a matched antibody pair. Validated in Sandwich ELISA.

Capture antibody: CDHR5 Recombinant monoclonal antibody, PBS Only (Capture) 87608-2-PBS (252533D12). 100 µg. Concentration 1 mg/mL.

Detection antibody: CDHR5 Recombinant monoclonal antibody, PBS Only (Detector) 87608-1-PBS (252533F4). 100 µg. Concentration 1 mg/mL.

Unconjugated rabbit recombinant monoclonal antibody pair in PBS only storage buffer at a concentration of 1 mg/mL, ready for conjugation. Created using Proteintech's proprietary in-house recombinant technology. Recombinant production enables unrivalled batch-to-batch consistency, easy scale-up, and future security of supply.

Matched antibody pairs are designed for use in a variety of assays and platforms that require matched antibody pairs.

Antibody use should be optimized for each application and assay.

Storage

Storage:

Store at -80°C.

Storage buffer:

PBS only

For technical support and original validation data for this product please contact:

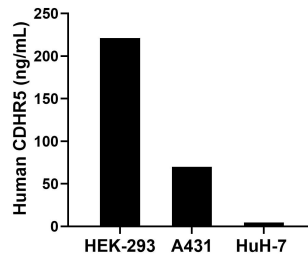
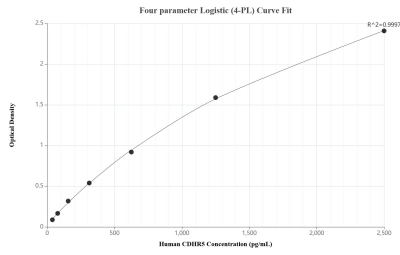
T: 1 (888) 4PTGLAB (1-888-478-4522) (toll free in USA), or 1(312) 455-8498 (outside USA)

E: proteintech@ptglab.com

W: ptglab.com

This product is exclusively available under Proteintech Group brand and is not available to purchase from any other manufacturer.

Selected Validation Data



Sandwich ELISA standard curve of MP03089-1, Human CDHR5 Recombinant Matched Antibody Pair - PBS only. 87608-2-PBS was coated to a plate as the capture antibody and incubated with serial dilutions of standard Eg5775. 87608-1-PBS was HRP conjugated as the detection antibody. Range: 39.1-2500 pg/mL

The mean CDHR5 concentration was determined to be 220.9 ng/mL in HEK-293 cell extract based on a 1.2 mg/mL extract load, 69.7 ng/mL in A431 cell extract based on a 1.2 mg/mL extract load and 4.5 ng/mL in HuH-7 cell extract based on a 1.2 mg/mL extract load.