

For Research Use Only

CREBBP Recombinant Matched Antibody Pair, PBS Only



Catalog Number:MP03100-2

Capture Antibody Information

Catalog Number:

86481-4-PBS

Host:

Rabbit

Isotype:

IgG

Purification Method:

Protein A purification

Clone ID:

253020C4

Reactivity:

human

Immunogen Catalog Number:

Ag27489

Conjugate:

Unconjugated

Full name:

CREB binding protein

Gene ID:

1387

Detection Antibody Information

Catalog Number:

86481-2-PBS

Host:

Rabbit

Isotype:

IgG

Purification Method:

Protein A purification

Clone ID:

253020G10

Reactivity:

human

GenBank:

NM_001079846

Immunogen Catalog Number:

Ag27489

Conjugate:

Unconjugated

Full name:

CREB binding protein

Gene ID:

1387

Applications

Tested Applications:

Sandwich ELISA

Range:

39.1-2500 pg/mL (Sandwich ELISA)

Recommended Dilutions:

It is recommended that this reagent should be titrated in each testing system to obtain optimal results.

Product Information

MP03100-2 targets CREBBP in immunoassays as a matched antibody pair. Validated in Sandwich ELISA.

Capture antibody: CREBBP Recombinant monoclonal antibody, PBS Only (Capture) 86481-4-PBS (253020C4). 100 µg. Concentration 1 mg/mL.

Detection antibody: CREBBP Recombinant monoclonal antibody, PBS Only (Detector) 86481-2-PBS (253020G10). 100 µg. Concentration 1 mg/mL.

Unconjugated rabbit recombinant monoclonal antibody pair in PBS only storage buffer at a concentration of 1 mg/mL, ready for conjugation. Created using Proteintech's proprietary in-house recombinant technology. Recombinant production enables unrivalled batch-to-batch consistency, easy scale-up, and future security of supply.

Matched antibody pairs are designed for use in a variety of assays and platforms that require matched antibody pairs.

Antibody use should be optimized for each application and assay.

Storage

Storage:

Store at -80°C.

Storage buffer:

PBS only

For technical support and original validation data for this product please contact:

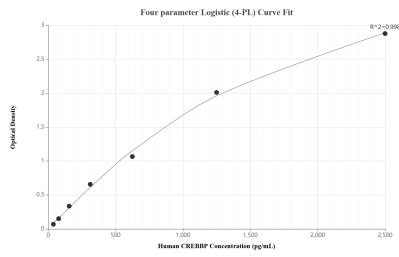
T: 1 (888) 4PTGLAB (1-888-478-4522) (toll free in USA), or 1(312) 455-8498 (outside USA)

E: proteintech@ptglab.com

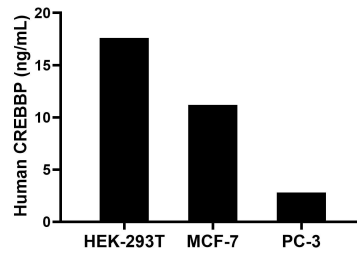
W: ptglab.com

This product is exclusively available under Proteintech Group brand and is not available to purchase from any other manufacturer.

Selected Validation Data



Sandwich ELISA standard curve of MP03100-2, Human CREBBP Recombinant Matched Antibody Pair - PBS only. 86481-4-PBS was coated to a plate as the capture antibody and incubated with serial dilutions of standard Ag27489. 86481-2-PBS was HRP conjugated as the detection antibody. Range: 39.1-2500 pg/mL



The mean CREBBP concentration was determined to be 17.6 ng/mL in HEK-293T cell extract based on a 1.2 mg/mL extract load, 11.2 ng/mL in MCF-7 cell extract based on a 1.2 mg/mL extract load and 2.8 ng/mL in PC-3 cell extract based on a 1.3 mg/mL extract load.