

For Research Use Only

TRAF3IP2 Recombinant Matched Antibody Pair, PBS Only



Catalog Number:MP03101-1

Capture Antibody Information

Catalog Number:
87596-1-PBS

Host:
Rabbit

Isotype:
IgG

Purification Method:
Protein A purification

Clone ID:
252775C5

Reactivity:
human

Immunogen Catalog Number:
Ag24840

Conjugate:
Unconjugated

Full name:
TRAF3 interacting protein 2

Gene ID:
10758

Detection Antibody Information

Catalog Number:
87596-2-PBS

Host:
Rabbit

Isotype:
IgG

Purification Method:
Protein A purification

Clone ID:
252775C6

Reactivity:
human

GenBank:
BC002823

Immunogen Catalog Number:
Ag24840

Conjugate:
Unconjugated

Full name:
TRAF3 interacting protein 2

Gene ID:
10758

Applications

Tested Applications:
Cytometric bead array

Range:
0.312-40 ng/mL (Cytometric Bead Array)

Recommended Dilutions:
It is recommended that this reagent should be titrated in each testing system to obtain optimal results.

Product Information

MP03101-1 targets TRAF3IP2 in immunoassays as a matched antibody pair. Validated in Cytometric bead array.

Capture antibody: TRAF3IP2 Recombinant monoclonal antibody, PBS Only (Capture) 87596-1-PBS (252775C5). 100 µg. Concentration 1 mg/mL.

Detection antibody: TRAF3IP2 Recombinant monoclonal antibody, PBS Only (Detector) 87596-2-PBS (252775C6). 100 µg. Concentration 1 mg/mL.

Unconjugated rabbit recombinant monoclonal antibody pair in PBS only storage buffer at a concentration of 1 mg/mL, ready for conjugation. Created using Proteintech's proprietary in-house recombinant technology. Recombinant production enables unrivalled batch-to-batch consistency, easy scale-up, and future security of supply.

Matched antibody pairs are designed for use in a variety of assays and platforms that require matched antibody pairs.

Antibody use should be optimized for each application and assay.

Storage

Storage:
Store at -80°C.
Storage buffer:
PBS only

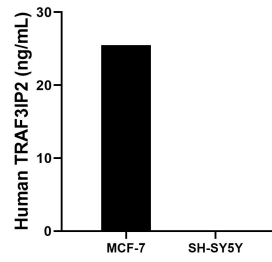
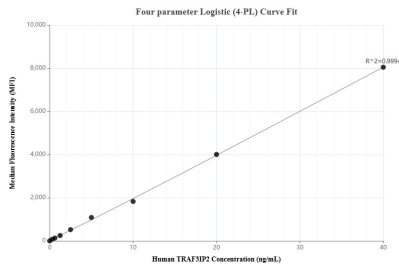
For technical support and original validation data for this product please contact:

T: 1 (888) 4PTGLAB (1-888-478-4522) (toll free in USA), or 1(312) 455-8498 (outside USA)

E: proteintech@ptglab.com
W: ptglab.com

This product is exclusively available under Proteintech Group brand and is not available to purchase from any other manufacturer.

Selected Validation Data



Cytometric bead array standard curve of MP03101-1, TRAF3IP2 Recombinant Matched Antibody Pair, PBS Only. Capture antibody: 87596-1-PBS. Detection antibody: 87596-2-PBS. Standard: Ag24840. Range: 0.312-40 ng/mL.

The mean TRAF3IP2 concentration was determined to be 25.5 ng/mL in MCF-7 cell extract based on a 1.2 mg/mL extract load, SH-SY5Y cell extract were served as a negative control.