

For Research Use Only

ZBTB2 Recombinant Matched Antibody Pair, PBS Only



Catalog Number:MP03125-1

Capture Antibody Information

Catalog Number:
87621-2-PBS

Host:
Rabbit

Isotype:
IgG

Purification Method:
Protein A purification

Clone ID:
252923C6

Reactivity:
human

Immunogen Catalog Number:
Ag24041

Conjugate:
Unconjugated

Full name:
zinc finger and BTB domain
containing 2

Gene ID:
57621

Detection Antibody Information

Catalog Number:
87621-1-PBS

Host:
Rabbit

Isotype:
IgG

Purification Method:
Protein A purification

Clone ID:
252923G8

Reactivity:
human, mouse, rat

GenBank:
BC020172

Immunogen Catalog Number:
Ag24041

Conjugate:
Unconjugated

Full name:
zinc finger and BTB domain
containing 2

Gene ID:
57621

Applications

Tested Applications:
Cytometric bead array

Range:
0.781-100 ng/mL (Cytometric Bead
Array)

Recommended Dilutions:
It is recommended that this reagent
should be titrated in each testing
system to obtain optimal results.

Product Information

MP03125-1 targets ZBTB2 in immunoassays as a matched antibody pair. Validated in Cytometric bead array.

Capture antibody: ZBTB2 Recombinant monoclonal antibody, PBS Only (Capture) 87621-2-PBS (252923C6). 100 µg. Concentration 1 mg/mL.

Detection antibody: ZBTB2 Recombinant monoclonal antibody, PBS Only (Detector) 87621-1-PBS (252923G8). 100 µg. Concentration 1 mg/mL.

Unconjugated rabbit recombinant monoclonal antibody pair in PBS only storage buffer at a concentration of 1 mg/mL, ready for conjugation. Created using Proteintech's proprietary in-house recombinant technology. Recombinant production enables unrivalled batch-to-batch consistency, easy scale-up, and future security of supply.

Matched antibody pairs are designed for use in a variety of assays and platforms that require matched antibody pairs.

Antibody use should be optimized for each application and assay.

Storage

Storage:
Store at -80°C.
Storage buffer:
PBS only

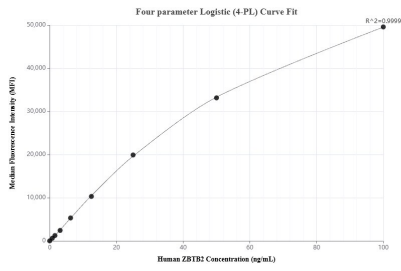
For technical support and original validation data for this product please contact:

T: 1 (888) 4PTGLAB (1-888-478-4522) (toll free
in USA), or 1(312) 455-8498 (outside USA)

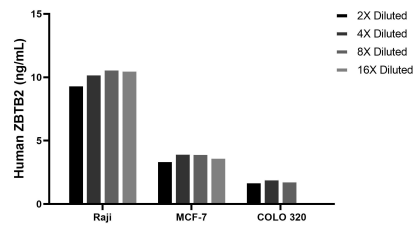
E: proteintech@ptglab.com
W: ptglab.com

This product is exclusively available under Proteintech Group brand and is not available to purchase from any other manufacturer.

Selected Validation Data



Cytometric bead array standard curve of MP03125-1, ZBTB2 Recombinant Matched Antibody Pair, PBS Only. Capture antibody: 87621-2-PBS. Detection antibody: 87621-1-PBS. Standard: Ag24041. Range: 0.781-100 ng/mL.



The mean ZBTB2 concentration was determined to be 10.3 ng/mL in Raji cell extract based on a 1.2 mg/mL extract load, 3.8 ng/mL in MCF-7 cell extract based on a 1.2 mg/mL extract load, 1.9 ng/mL in COLO 320 cell extract based on a 1.2 mg/mL extract load.