

For Research Use Only

# Mouse ART1 Recombinant Matched Antibody Pair, PBS Only



Catalog Number:MP03128-1

## Capture Antibody Information

Catalog Number:  
87577-3-PBS

Host:  
Rabbit

Isotype:  
IgG

Purification Method:  
Protein A purification

Clone ID:  
252922F6

Reactivity:  
mouse

Immunogen Catalog Number:  
Eg6314

Conjugate:  
Unconjugated

Full name:  
ADP-ribosyltransferase 1

Gene ID:  
11870

## Detection Antibody Information

Catalog Number:  
87577-2-PBS

Host:  
Rabbit

Isotype:  
IgG

Purification Method:  
Protein A purification

Clone ID:  
252922F2

Reactivity:  
mouse

GenBank:  
NM\_009710.4

Immunogen Catalog Number:  
Eg6314

Conjugate:  
Unconjugated

Full name:  
ADP-ribosyltransferase 1

Gene ID:  
11870

## Applications

Tested Applications:  
Cytometric bead array

Range:  
0.078-10 ng/mL (Cytometric Bead Array)

Recommended Dilutions:  
It is recommended that this reagent should be titrated in each testing system to obtain optimal results.

## Product Information

MP03128-1 targets ART1 in immunoassays as a matched antibody pair. Validated in Cytometric bead array.

Capture antibody: Mouse CD296/ART1 Recombinant monoclonal antibody, PBS Only (Capture) 87577-3-PBS (252922F6). 100 µg. Concentration 1 mg/mL.

Detection antibody: Mouse CD296/ART1 Recombinant monoclonal antibody, PBS Only (Detector) 87577-2-PBS (252922F2). 100 µg. Concentration 1 mg/mL.

Unconjugated rabbit recombinant monoclonal antibody pair in PBS only storage buffer at a concentration of 1 mg/mL, ready for conjugation. Created using Proteintech's proprietary in-house recombinant technology. Recombinant production enables unrivalled batch-to-batch consistency, easy scale-up, and future security of supply.

Matched antibody pairs are designed for use in a variety of assays and platforms that require matched antibody pairs.

Antibody use should be optimized for each application and assay.

## Storage

Storage:  
Store at -80°C.  
Storage buffer:  
PBS only

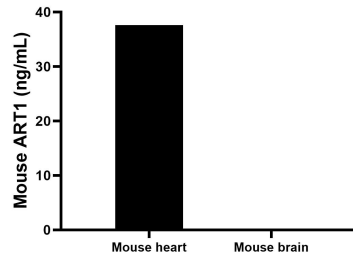
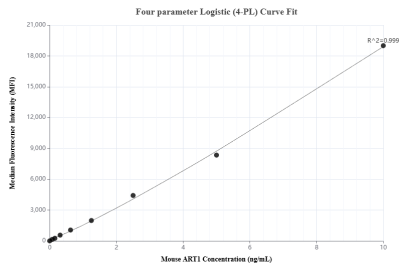
For technical support and original validation data for this product please contact:

T: 1 (888) 4PTGLAB (1-888-478-4522) (toll free in USA), or 1(312) 455-8498 (outside USA)

E: [proteintech@ptglab.com](mailto:proteintech@ptglab.com)  
W: [ptglab.com](http://ptglab.com)

This product is exclusively available under Proteintech Group brand and is not available to purchase from any other manufacturer.

## Selected Validation Data



Cytometric bead array standard curve of MP03128-1, MOUSE ART1 Recombinant Matched Antibody Pair, PBS Only. Capture antibody: 87577-3-PBS. Detection antibody: 87577-2-PBS. Standard: Eg6314. Range: 0.078-10 ng/mL

The mean ART1 concentration was determined to be 37.6 ng/mL in mouse heart tissue extract based on a 5.4 mg/mL extract load, mouse brain tissue extract were served as a negative control.