

For Research Use Only

# Cardiac Troponin I Recombinant Matched Antibody Pair, PBS Only



Catalog Number:MP03132-1

## Capture Antibody Information

Catalog Number:

86791-3-PBS

Host:

Rabbit

Isotype:

IgG

Purification Method:

Protein A purification

Clone ID:

251696A4

Reactivity:

human

Immunogen Catalog Number:

Ag16365

Conjugate:

Unconjugated

Full name:

troponin I type 3 (cardiac)

Gene ID:

7137

## Detection Antibody Information

Catalog Number:

86791-2-PBS

Host:

Rabbit

Isotype:

IgG

Purification Method:

Protein A purification

Clone ID:

251696G10

Reactivity:

human

GenBank:

BC096165

Immunogen Catalog Number:

Ag16365

Conjugate:

Unconjugated

Full name:

troponin I type 3 (cardiac)

Gene ID:

7137

## Applications

Tested Applications:

Cytometric bead array

Range:

0.781-100 ng/mL (Cytometric Bead Array)

Recommended Dilutions:

It is recommended that this reagent should be titrated in each testing system to obtain optimal results.

## Product Information

MP03132-1 targets Cardiac Troponin I in immunoassays as a matched antibody pair. Validated in Cytometric bead array.

Capture antibody: Cardiac Troponin I Recombinant monoclonal antibody, PBS Only (Capture) 86791-3-PBS (251696A4). 100 µg. Concentration 1 mg/mL.

Detection antibody: Cardiac Troponin I Recombinant monoclonal antibody, PBS Only (Detector) 86791-2-PBS (251696G10). 100 µg. Concentration 1 mg/mL.

Unconjugated rabbit recombinant monoclonal antibody pair in PBS only storage buffer at a concentration of 1 mg/mL, ready for conjugation. Created using Proteintech's proprietary in-house recombinant technology. Recombinant production enables unrivalled batch-to-batch consistency, easy scale-up, and future security of supply.

Matched antibody pairs are designed for use in a variety of assays and platforms that require matched antibody pairs.

Antibody use should be optimized for each application and assay.

## Storage

Storage:

Store at -80°C.

Storage buffer:

PBS only

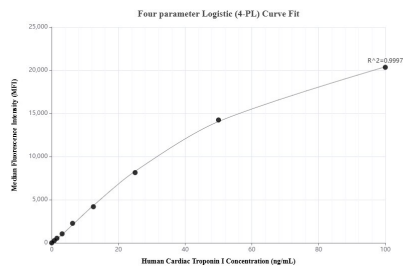
For technical support and original validation data for this product please contact:

T: 1 (888) 4PTGLAB (1-888-478-4522) (toll free in USA), or 1(312) 455-8498 (outside USA)

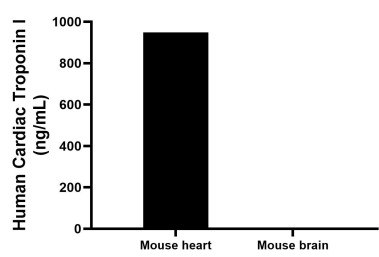
E: [proteintech@ptglab.com](mailto:proteintech@ptglab.com)  
W: [ptglab.com](http://ptglab.com)

This product is exclusively available under Proteintech Group brand and is not available to purchase from any other manufacturer.

## Selected Validation Data



Cytometric bead array standard curve of MP03132-1, Cardiac Troponin I Recombinant Matched Antibody Pair, PBS Only. Capture antibody: 86791-3-PBS. Detection antibody: 86791-2-PBS. Standard: Ag16365. Range: 0.781-100 ng/mL



The mean Cardiac Troponin I concentration was determined to be 948.1 ng/mL in mouse heart tissue extract based on a 5.4 mg/mL extract load, mouse brain tissue extract were served as a negative control.