

For Research Use Only

# Mouse LYVE-1 Recombinant Matched Antibody Pair, PBS Only



Catalog Number:MP03135-1

## Capture Antibody Information

**Catalog Number:**  
87635-3-PBS  
**Host:**  
Rabbit  
**Isotype:**  
IgG  
**Purification Method:**  
Protein A purification

**Clone ID:**  
252928B2  
**Reactivity:**  
mouse  
**Immunogen Catalog Number:**  
Eg6367

**Conjugate:**  
Unconjugated  
**Full name:**  
lymphatic vessel endothelial hyaluronan receptor 1  
**Gene ID:**  
114332

## Detection Antibody Information

**Catalog Number:**  
87635-2-PBS  
**Host:**  
Rabbit  
**Isotype:**  
IgG  
**Purification Method:**  
Protein A purification

**Clone ID:**  
252928H2  
**Reactivity:**  
mouse  
**GenBank:**  
NM\_053247.4  
**Immunogen Catalog Number:**  
Eg6367

**Conjugate:**  
Unconjugated  
**Full name:**  
lymphatic vessel endothelial hyaluronan receptor 1  
**Gene ID:**  
114332

## Applications

**Tested Applications:**  
Cytometric bead array

**Range:**  
0.469-30 ng/mL (Cytometric Bead Array)

**Recommended Dilutions:**  
It is recommended that this reagent should be titrated in each testing system to obtain optimal results.

## Product Information

MP03135-1 targets LYVE-1 in immunoassays as a matched antibody pair. Validated in Cytometric bead array.

Capture antibody: Mouse LyVE-1 Recombinant monoclonal antibody, PBS Only (Capture) 87635-3-PBS (252928B2). 100 µg. Concentration 1 mg/mL.

Detection antibody: Mouse LyVE-1 Recombinant monoclonal antibody, PBS Only (Detector) 87635-2-PBS (252928H2). 100 µg. Concentration 1 mg/mL.

Unconjugated rabbit recombinant monoclonal antibody pair in PBS only storage buffer at a concentration of 1 mg/mL, ready for conjugation. Created using Proteintech's proprietary in-house recombinant technology. Recombinant production enables unrivalled batch-to-batch consistency, easy scale-up, and future security of supply.

Matched antibody pairs are designed for use in a variety of assays and platforms that require matched antibody pairs.

Antibody use should be optimized for each application and assay.

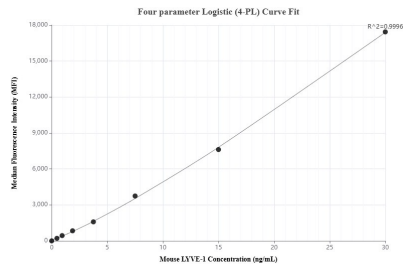
## Storage

**Storage:**  
Store at -80°C.  
**Storage buffer:**  
PBS only

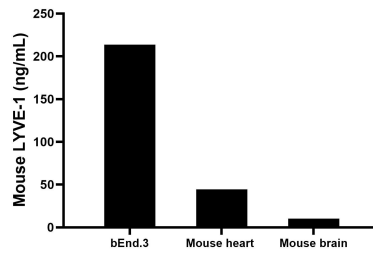
For technical support and original validation data for this product please contact:  
T: 1 (888) 4PTGLAB (1-888-478-4522) (toll free in USA), or 1(312) 455-8498 (outside USA) E: [proteintech@ptglab.com](mailto:proteintech@ptglab.com) W: [ptglab.com](http://ptglab.com)

This product is exclusively available under Proteintech Group brand and is not available to purchase from any other manufacturer.

## Selected Validation Data



Cytometric bead array standard curve of MP03135-1, MOUSE LYVE-1 Recombinant Matched Antibody Pair, PBS Only. Capture antibody: 87635-3-PBS. Detection antibody: 87635-2-PBS. Standard: Eg6367. Range: 0.469-30 ng/mL



The mean LYVE-1 concentration was determined to be 213.6 ng/mL in bEnd.3 cell extract based on a 1.2 mg/mL extract load, 44.3 ng/mL in mouse heart tissue extract based on a 5.4 mg/mL extract load, 10.4 ng/mL in mouse brain tissue extract based on a 2.2 mg/mL extract load.