

For Research Use Only

Mouse ST6GAL1 Recombinant Matched Antibody Pair, PBS Only



Catalog Number:MP03142-1

Capture Antibody Information

Catalog Number:
87468-1-PBS
Host:
Rabbit
Isotype:
IgG
Purification Method:
Protein A purification

Clone ID:
251963F1
Reactivity:
mouse, rat
Immunogen Catalog Number:
Eg5251

Conjugate:
Unconjugated
Full name:
beta galactoside alpha 2,6 sialyltransferase 1
Gene ID:
20440

Detection Antibody Information

Catalog Number:
87468-2-PBS
Host:
Rabbit
Isotype:
IgG
Purification Method:
Protein A purification

Clone ID:
251963E5
Reactivity:
mouse
GenBank:
NM_001252505.1
Immunogen Catalog Number:
Eg5251

Conjugate:
Unconjugated
Full name:
beta galactoside alpha 2,6 sialyltransferase 1
Gene ID:
20440

Applications

Tested Applications:
Sandwich ELISA

Range:
62.5-2000 pg/mL (Sandwich ELISA)

Recommended Dilutions:
It is recommended that this reagent should be titrated in each testing system to obtain optimal results.

Product Information

MP03142-1 targets ST6GAL1 in immunoassays as a matched antibody pair. Validated in Sandwich ELISA.

Capture antibody: Mouse ST6GAL1 Recombinant monoclonal antibody, PBS Only (Capture) 87468-1-PBS (251963F1). 100 µg. Concentration 1 mg/mL.

Detection antibody: Mouse ST6GAL1 Recombinant monoclonal antibody, PBS Only (Detector) 87468-2-PBS (251963E5). 100 µg. Concentration 1 mg/mL.

Unconjugated rabbit recombinant monoclonal antibody pair in PBS only storage buffer at a concentration of 1 mg/mL, ready for conjugation. Created using Proteintech's proprietary in-house recombinant technology. Recombinant production enables unrivalled batch-to-batch consistency, easy scale-up, and future security of supply.

Matched antibody pairs are designed for use in a variety of assays and platforms that require matched antibody pairs.

Antibody use should be optimized for each application and assay.

Storage

Storage:
Store at -80°C.
Storage buffer:
PBS only

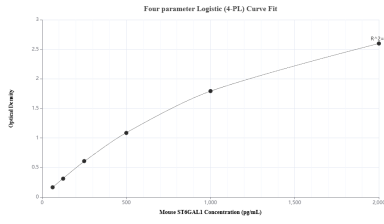
For technical support and original validation data for this product please contact:

T: 1 (888) 4PTGLAB (1-888-478-4522) (toll free in USA), or 1(312) 455-8498 (outside USA)

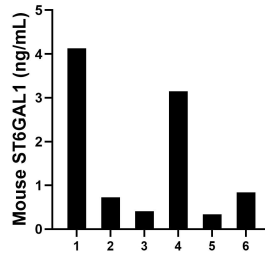
E: proteintech@ptglab.com
W: ptglab.com

This product is exclusively available under Proteintech Group brand and is not available to purchase from any other manufacturer.

Selected Validation Data



Sandwich ELISA standard curve of MP03142-1, Mouse ST6GAL1 Recombinant Matched Antibody Pair - PBS only. 87468-1-PBS was coated to a plate as the capture antibody and incubated with serial dilutions of standard Eg5251. 87468-2-PBS was HRP conjugated as the detection antibody. Range: 62.5-2000 pg/mL



Serum of six mice was measured. The mouse ST6GAL1 concentration of detected samples was determined to be 1.60 ng/mL with a range of 0.34 - 4.13 ng/mL