

For Research Use Only

# NCS1 Recombinant Matched Antibody Pair, PBS Only



Catalog Number:MP03147-1

## Capture Antibody Information

Catalog Number:  
87673-3-PBS

Host:  
Rabbit

Isotype:  
IgG

Purification Method:  
Protein A purification

Clone ID:  
253130E6

Reactivity:  
human

Immunogen Catalog Number:  
Eg5439

Conjugate:  
Unconjugated

Full name:  
frequenin homolog (Drosophila)

Gene ID:  
23413

## Detection Antibody Information

Catalog Number:  
87673-2-PBS

Host:  
Rabbit

Isotype:  
IgG

Purification Method:  
Protein A purification

Clone ID:  
253130C7

Reactivity:  
human

GenBank:  
NM\_014286.3

Immunogen Catalog Number:  
Eg5439

Conjugate:  
Unconjugated

Full name:  
frequenin homolog (Drosophila)

Gene ID:  
23413

## Applications

Tested Applications:  
Cytometric bead array

Range:  
0.156-20 ng/mL (Cytometric Bead Array)

Recommended Dilutions:  
It is recommended that this reagent should be titrated in each testing system to obtain optimal results.

## Product Information

MP03147-1 targets NCS1 in immunoassays as a matched antibody pair. Validated in Cytometric bead array.

Capture antibody: NCS1 Recombinant monoclonal antibody, PBS Only (Capture) 87673-3-PBS (253130E6). 100 µg. Concentration 1 mg/mL.

Detection antibody: NCS1 Recombinant monoclonal antibody, PBS Only (Detector) 87673-2-PBS (253130C7). 100 µg. Concentration 1 mg/mL.

Unconjugated rabbit recombinant monoclonal antibody pair in PBS only storage buffer at a concentration of 1 mg/mL, ready for conjugation. Created using Proteintech's proprietary in-house recombinant technology. Recombinant production enables unrivalled batch-to-batch consistency, easy scale-up, and future security of supply.

Matched antibody pairs are designed for use in a variety of assays and platforms that require matched antibody pairs.

Antibody use should be optimized for each application and assay.

## Storage

Storage:  
Store at -80°C.  
Storage buffer:  
PBS only

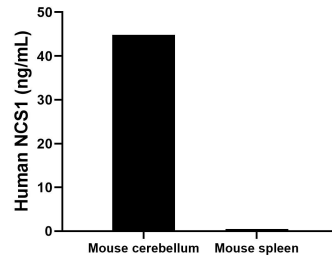
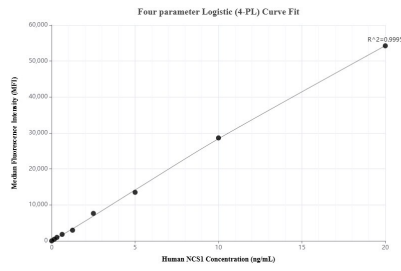
For technical support and original validation data for this product please contact:

T: 1 (888) 4PTGLAB (1-888-478-4522) (toll free in USA), or 1(312) 455-8498 (outside USA)

E: [proteintech@ptglab.com](mailto:proteintech@ptglab.com)  
W: [ptglab.com](http://ptglab.com)

This product is exclusively available under Proteintech Group brand and is not available to purchase from any other manufacturer.

## Selected Validation Data



Cytometric bead array standard curve of MP03147-1, NCS1 Recombinant Matched Antibody Pair, PBS Only. Capture antibody: 87673-3-PBS. Detection antibody: 87673-2-PBS. Standard: Eg5439. Range: 0.156-20 ng/mL

The mean NCS1 concentration was determined to be 44.8 ng/mL in mouse cerebellum tissue extract based on a 6.0 mg/mL extract load, 0.3 ng/mL in mouse spleen tissue extract based on a 6.4 mg/mL extract load.