

Collagen Type XXIII Recombinant Matched Antibody Pair, PBS Only

Catalog Number:MP03156-1

Capture Antibody Information

Catalog Number:

87687-2-PBS

Host:

Rabbit

Isotype:

IgG

Purification Method:

Protein A purification

Clone ID:

253143G12

Reactivity:

human

Immunogen Catalog Number:

Eg4452

Conjugate:

Unconjugated

Full name:

collagen, type XXIII, alpha 1

Gene ID:

91522

Detection Antibody Information

Catalog Number:

87687-1-PBS

Host:

Rabbit

Isotype:

IgG

Purification Method:

Protein A purification

Clone ID:

253143A4

Reactivity:

human

GenBank:

NM_173465.3

Immunogen Catalog Number:

Eg4452

Conjugate:

Unconjugated

Full name:

collagen, type XXIII, alpha 1

Gene ID:

91522

Applications

Tested Applications:

Cytometric bead array

Range:

0.156-20 ng/mL (Cytometric Bead Array)

Recommended Dilutions:

It is recommended that this reagent should be titrated in each testing system to obtain optimal results.

Product Information

MP03156-1 targets Collagen Type XXIII in immunoassays as a matched antibody pair. Validated in Cytometric bead array.

Capture antibody: Collagen XXIII alpha 1/COL23A1 Recombinant monoclonal antibody, PBS Only (Capture) 87687-2-PBS (253143G12). 100 µg. Concentration 1 mg/ml.

Detection antibody: Collagen XXIII alpha 1/COL23A1 Recombinant monoclonal antibody, PBS Only (Detector) 87687-1-PBS (253143A4). 100 µg. Concentration 1 mg/ml.

Unconjugated rabbit recombinant monoclonal antibody pair in PBS only storage buffer at a concentration of 1 mg/mL, ready for conjugation. Created using Proteintech's proprietary in-house recombinant technology. Recombinant production enables unrivalled batch-to-batch consistency, easy scale-up, and future security of supply.

Matched antibody pairs are designed for use in a variety of assays and platforms that require matched antibody pairs.

Antibody use should be optimized for each application and assay.

Storage

Storage:

Store at -80°C.

Storage buffer:

PBS only

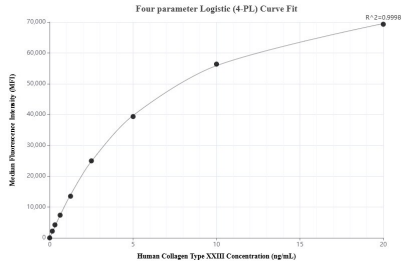
For technical support and original validation data for this product please contact:

T: 1 (888) 4PTGLAB (1-888-478-4522) (toll free in USA), or 1(312) 455-8498 (outside USA)

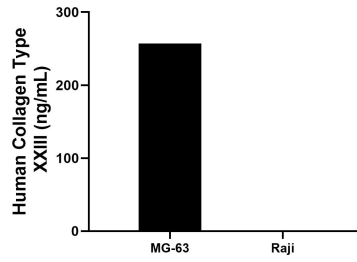
E: proteintech@ptglab.com
W: ptglab.com

This product is exclusively available under Proteintech Group brand and is not available to purchase from any other manufacturer.

Selected Validation Data



Cytometric bead array standard curve of MP03156-1, Collagen Type XXIII Recombinant Matched Antibody Pair, PBS Only. Capture antibody: 87687-2-PBS. Detection antibody: 87687-1-PBS. Standard: Eg4452. Range: 0.156-20 ng/mL



The mean Collagen Type XXIII concentration was determined to be 257.0 ng/mL in MG-63 cell extract based on a 1.2 mg/mL extract load, Raji cell extract were served as a negative control.