

For Research Use Only

Mouse PTPRF Recombinant Matched Antibody Pair, PBS Only



Catalog Number:MP03157-1

Capture Antibody Information

Catalog Number:
87690-2-PBS
Host:
Rabbit
Isotype:
IgG
Purification Method:
Protein A purification

Clone ID:
253228G4
Reactivity:
mouse
Immunogen Catalog Number:
Eg6805

Conjugate:
Unconjugated
Full name:
protein tyrosine phosphatase, receptor type, F
Gene ID:
19268

Detection Antibody Information

Catalog Number:
87690-1-PBS
Host:
Rabbit
Isotype:
IgG
Purification Method:
Protein A purification

Clone ID:
253228C3
Reactivity:
mouse
GenBank:
NM_011213.2
Immunogen Catalog Number:
Eg6805

Conjugate:
Unconjugated
Full name:
protein tyrosine phosphatase, receptor type, F
Gene ID:
19268

Applications

Tested Applications:
Cytometric bead array

Range:
0.312-40 ng/mL (Cytometric Bead Array)

Recommended Dilutions:
It is recommended that this reagent should be titrated in each testing system to obtain optimal results.

Product Information

MP03157-1 targets PTPRF in immunoassays as a matched antibody pair. Validated in Cytometric bead array.

Capture antibody: Mouse PTPRF Recombinant monoclonal antibody, PBS Only (Capture) 87690-2-PBS (253228G4). 100 µg. Concentration 1 mg/mL.

Detection antibody: Mouse PTPRF Recombinant monoclonal antibody, PBS Only (Detector) 87690-1-PBS (253228C3). 100 µg. Concentration 1 mg/mL.

Unconjugated rabbit recombinant monoclonal antibody pair in PBS only storage buffer at a concentration of 1 mg/mL, ready for conjugation. Created using Proteintech's proprietary in-house recombinant technology. Recombinant production enables unrivalled batch-to-batch consistency, easy scale-up, and future security of supply.

Matched antibody pairs are designed for use in a variety of assays and platforms that require matched antibody pairs.

Antibody use should be optimized for each application and assay.

Storage

Storage:
Store at -80°C.
Storage buffer:
PBS only

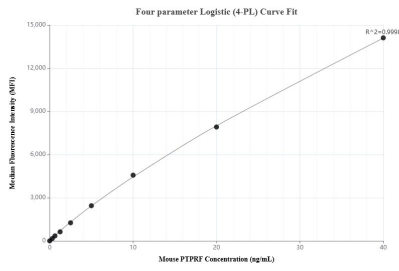
For technical support and original validation data for this product please contact:

T: 1 (888) 4PTGLAB (1-888-478-4522) (toll free in USA), or 1(312) 455-8498 (outside USA)

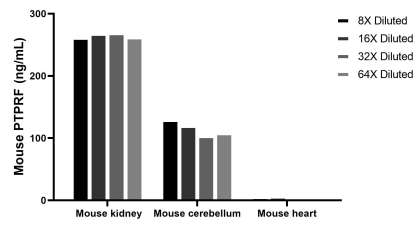
E: proteintech@ptglab.com
W: ptglab.com

This product is exclusively available under Proteintech Group brand and is not available to purchase from any other manufacturer.

Selected Validation Data



Cytometric bead array standard curve of MP03157-1, MOUSE PTPRF Recombinant Matched Antibody Pair, PBS Only. Capture antibody: 87690-2-PBS. Detection antibody: 87690-1-PBS. Standard: Eg6805. Range: 0.312-40 ng/mL



The mean PTPRF concentration was determined to be 264.8 ng/mL in mouse kidney tissue extract based on a 8.4 mg/mL extract load, 114.9 ng/mL in mouse cerebellum tissue extract based on a 6.0 mg/mL extract load, 5.4 ng/mL in mouse heart tissue extract based on a 5.4 mg/mL extract load.