

For Research Use Only

Mouse Integrin beta 5 Recombinant Matched Antibody Pair, PBS Only



Catalog Number:MP03166-1

Capture Antibody Information

Catalog Number:
87465-2-PBS

Host:
Rabbit

Isotype:
IgG

Purification Method:
Protein A purification

Clone ID:
252748C4

Reactivity:
mouse

Immunogen Catalog Number:
Eg10456

Conjugate:
Unconjugated

Full name:
integrin beta 5

Gene ID:
16419

Detection Antibody Information

Catalog Number:
87465-1-PBS

Host:
Rabbit

Isotype:
IgG

Purification Method:
Protein A purification

Clone ID:
252748B7

Reactivity:
mouse, rat

GenBank:
Immunogen Catalog Number:
Eg10456

Conjugate:
Unconjugated

Full name:
integrin beta 5

Gene ID:
16419

Applications

Tested Applications:
Sandwich ELISA

Range:
0.156-10 ng/mL (Sandwich ELISA)

Recommended Dilutions:
It is recommended that this reagent should be titrated in each testing system to obtain optimal results.

Product Information

MP03166-1 targets Integrin beta 5 in immunoassays as a matched antibody pair. Validated in Sandwich ELISA.

Capture antibody: Mouse ITB5 Recombinant monoclonal antibody, PBS Only (Capture) 87465-2-PBS (252748C4). 100 µg. Concentration 1 mg/mL.

Detection antibody: Mouse Integrin beta 5 Recombinant monoclonal antibody, PBS Only (Detector) 87465-1-PBS (252748B7). 100 µg. Concentration 1 mg/mL.

Unconjugated rabbit recombinant monoclonal antibody pair in PBS only storage buffer at a concentration of 1 mg/mL, ready for conjugation. Created using Proteintech's proprietary in-house recombinant technology. Recombinant production enables unrivalled batch-to-batch consistency, easy scale-up, and future security of supply.

Matched antibody pairs are designed for use in a variety of assays and platforms that require matched antibody pairs.

Antibody use should be optimized for each application and assay.

Storage

Storage:
Store at -80°C.
Storage buffer:
PBS only

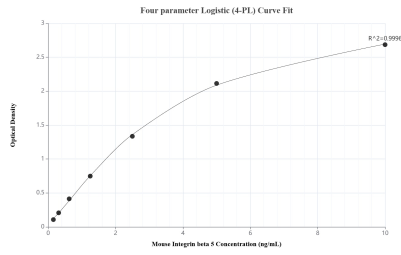
For technical support and original validation data for this product please contact:

T: 1 (888) 4PTGLAB (1-888-478-4522) (toll free in USA), or 1(312) 455-8498 (outside USA)

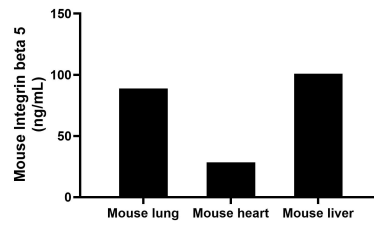
E: proteintech@ptglab.com
W: ptglab.com

This product is exclusively available under Proteintech Group brand and is not available to purchase from any other manufacturer.

Selected Validation Data



Sandwich ELISA standard curve of MP03166-1, Mouse Integrin beta 5 Recombinant Matched Antibody Pair - PBS only. 87465-2-PBS was coated to a plate as the capture antibody and incubated with serial dilutions of standard Eg10456. 87465-1-PBS was HRP conjugated as the detection antibody. Range: 0.156-10 ng/mL



The mean Integrin beta 5 concentration was determined to be 88.87 ng/mL in mouse lung extract based on a 5.00 mg/mL extract load, 28.42 ng/mL in mouse heart extract based on a 5.40 mg/mL extract load and 100.97 ng/mL in mouse liver extract based on a 8.40 mg/mL extract load.