

For Research Use Only

FOLR3 Recombinant Matched Antibody Pair, PBS Only



Catalog Number:MP03170-2

Capture Antibody Information

Catalog Number:

87719-3-PBS

Host:

Rabbit

Isotype:

IgG

Purification Method:

Protein A purification

Clone ID:

250411F7

Reactivity:

human

Immunogen Catalog Number:

Eg3170

Conjugate:

Unconjugated

Full name:

folate receptor 3 (gamma)

Gene ID:

2352

Detection Antibody Information

Catalog Number:

87719-1-PBS

Host:

Rabbit

Isotype:

IgG

Purification Method:

Protein A purification

Clone ID:

250411D7

Reactivity:

human

GenBank:

NM_000804.3

Immunogen Catalog Number:

Eg3170

Conjugate:

Unconjugated

Full name:

folate receptor 3 (gamma)

Gene ID:

2352

Applications

Tested Applications:

Sandwich ELISA

Range:

39.1-2500 pg/mL (Sandwich ELISA)

Recommended Dilutions:

It is recommended that this reagent should be titrated in each testing system to obtain optimal results.

Product Information

MP03170-2 targets FOLR3 in immunoassays as a matched antibody pair. Validated in Sandwich ELISA.

Capture antibody: FOLR3 Recombinant monoclonal antibody, PBS Only (Capture) 87719-3-PBS (250411F7). 100 µg. Concentration 1 mg/mL.

Detection antibody: FOLR3 Recombinant monoclonal antibody, PBS Only (Detector) 87719-1-PBS (250411D7). 100 µg. Concentration 1 mg/mL.

Unconjugated rabbit recombinant monoclonal antibody pair in PBS only storage buffer at a concentration of 1 mg/mL, ready for conjugation. Created using Proteintech's proprietary in-house recombinant technology. Recombinant production enables unrivalled batch-to-batch consistency, easy scale-up, and future security of supply.

Matched antibody pairs are designed for use in a variety of assays and platforms that require matched antibody pairs.

Antibody use should be optimized for each application and assay.

Storage

Storage:

Store at -80°C.

Storage buffer:

PBS only

For technical support and original validation data for this product please contact:

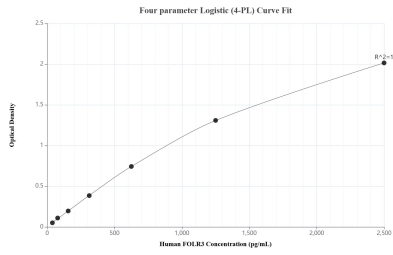
T: 1 (888) 4PTGLAB (1-888-478-4522) (toll free in USA), or 1(312) 455-8498 (outside USA)

E: proteintech@ptglab.com

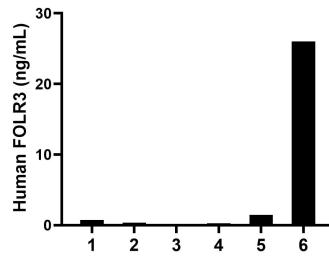
W: ptglab.com

This product is exclusively available under Proteintech Group brand and is not available to purchase from any other manufacturer.

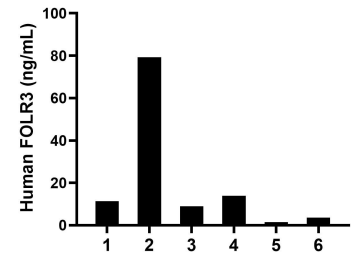
Selected Validation Data



Sandwich ELISA standard curve of MP03170-2, Human FOLR3 Recombinant Matched Antibody Pair - PBS only. 87719-3-PBS was coated to a plate as the capture antibody and incubated with serial dilutions of standard Eg3170. 87719-1-PBS was HRP conjugated as the detection antibody. Range: 39.1-2500 pg/mL



Plasma of six individual healthy human donors was measured. The FOLR3 concentration of detected samples was determined to be 4.8 ng/mL with a range of 0.1-26.0 ng/mL



Serum of six individual healthy human donors was measured. The FOLR3 concentration of detected samples was determined to be 19.7 ng/mL with a range of 1.4-79.2 ng/mL