

For Research Use Only

# CIB1 Recombinant Matched Antibody Pair, PBS Only



Catalog Number:MP03171-2

## Capture Antibody Information

**Catalog Number:**  
87697-3-PBS  
**Host:**  
Rabbit  
**Isotype:**  
IgG  
**Purification Method:**  
Protein A purification

**Clone ID:**  
253241B12  
**Reactivity:**  
human  
**Immunogen Catalog Number:**  
Eg5476

**Conjugate:**  
Unconjugated  
**Full name:**  
calcium and integrin binding 1 (calmyrin)  
**Gene ID:**  
10519

## Detection Antibody Information

**Catalog Number:**  
87697-4-PBS  
**Host:**  
Rabbit  
**Isotype:**  
IgG  
**Purification Method:**  
Protein A purification

**Clone ID:**  
253241F10  
**Reactivity:**  
human  
**GenBank:**  
NM\_006384.3  
**Immunogen Catalog Number:**  
Eg5476

**Conjugate:**  
Unconjugated  
**Full name:**  
calcium and integrin binding 1 (calmyrin)  
**Gene ID:**  
10519

## Applications

**Tested Applications:**  
Sandwich ELISA

**Range:**  
39.1-2500 pg/mL (Sandwich ELISA)

**Recommended Dilutions:**  
It is recommended that this reagent should be titrated in each testing system to obtain optimal results.

## Product Information

MP03171-2 targets CIB1 in immunoassays as a matched antibody pair. Validated in Sandwich ELISA.

Capture antibody: CIB1 Recombinant monoclonal antibody, PBS Only (Capture) 87697-3-PBS (253241B12). 100 µg. Concentration 1 mg/mL.

Detection antibody: CIB1 Recombinant monoclonal antibody, PBS Only (Detector) 87697-4-PBS (253241F10). 100 µg. Concentration 1 mg/mL.

Unconjugated rabbit recombinant monoclonal antibody pair in PBS only storage buffer at a concentration of 1 mg/mL, ready for conjugation. Created using Proteintech's proprietary in-house recombinant technology. Recombinant production enables unrivalled batch-to-batch consistency, easy scale-up, and future security of supply.

Matched antibody pairs are designed for use in a variety of assays and platforms that require matched antibody pairs.

Antibody use should be optimized for each application and assay.

## Storage

**Storage:**  
Store at -80°C.  
**Storage buffer:**  
PBS only

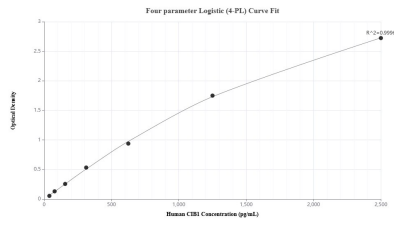
For technical support and original validation data for this product please contact:

T: 1 (888) 4PTGLAB (1-888-478-4522) (toll free in USA), or 1(312) 455-8498 (outside USA)

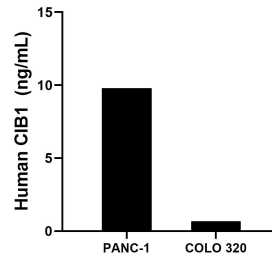
E: proteintech@ptglab.com  
W: ptglab.com

This product is exclusively available under Proteintech Group brand and is not available to purchase from any other manufacturer.

## Selected Validation Data



Sandwich ELISA standard curve of MP03171-2, Human CIB1 Recombinant Matched Antibody Pair - PBS only. 87697-3-PBS was coated to a plate as the capture antibody and incubated with serial dilutions of standard Eg5476. 87697-4-PBS was HRP conjugated as the detection antibody. Range: 39.1-2500 pg/mL



The mean CIB1 concentration was determined to be 9.84 ng/mL in PANC-1 cell extract based on a 1.2 mg/mL extract load and 0.67 ng/mL in COLO 320 cell extract based on a 1.2 mg/mL extract load.