

For Research Use Only

SUFU Recombinant Matched Antibody Pair, PBS Only



Catalog Number:MP03174-1

Capture Antibody Information

Catalog Number:

87724-2-PBS

Host:

Rabbit

Isotype:

IgG

Purification Method:

Protein A purification

Clone ID:

253256A4

Reactivity:

human

Immunogen Catalog Number:

Ag25193

Conjugate:

Unconjugated

Full name:

suppressor of fused homolog
(Drosophila)

Gene ID:

51684

Detection Antibody Information

Catalog Number:

87724-1-PBS

Host:

Rabbit

Isotype:

IgG

Purification Method:

Protein A purification

Clone ID:

253256G1

Reactivity:

human

GenBank:

BC013291

Immunogen Catalog Number:

Ag25193

Conjugate:

Unconjugated

Full name:

suppressor of fused homolog
(Drosophila)

Gene ID:

51684

Applications

Tested Applications:

Cytometric bead array

Range:

0.312-40 ng/mL (Cytometric Bead Array)

Recommended Dilutions:

It is recommended that this reagent should be titrated in each testing system to obtain optimal results.

Product Information

MP03174-1 targets SUFU in immunoassays as a matched antibody pair. Validated in Cytometric bead array.

Capture antibody: SUFU Recombinant monoclonal antibody, PBS Only (Capture) 87724-2-PBS (253256A4). 100 µg. Concentration 1 mg/mL.

Detection antibody: SUFU Recombinant monoclonal antibody, PBS Only (Detector) 87724-1-PBS (253256G1). 100 µg. Concentration 1 mg/mL.

Unconjugated rabbit recombinant monoclonal antibody pair in PBS only storage buffer at a concentration of 1 mg/mL, ready for conjugation. Created using Proteintech's proprietary in-house recombinant technology. Recombinant production enables unrivalled batch-to-batch consistency, easy scale-up, and future security of supply.

Matched antibody pairs are designed for use in a variety of assays and platforms that require matched antibody pairs.

Antibody use should be optimized for each application and assay.

Storage

Storage:

Store at -80°C.

Storage buffer:

PBS only

For technical support and original validation data for this product please contact:

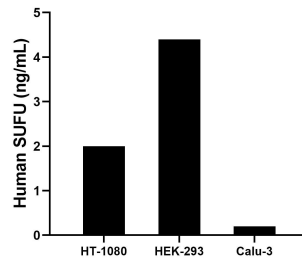
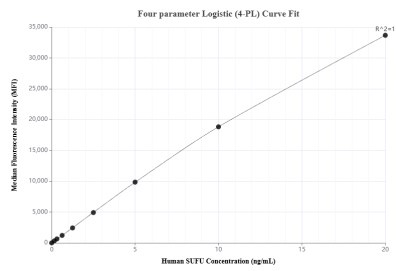
T: 1 (888) 4PTGLAB (1-888-478-4522) (toll free in USA), or 1(312) 455-8498 (outside USA)

E: proteintech@ptglab.com

W: ptglab.com

This product is exclusively available under Proteintech Group brand and is not available to purchase from any other manufacturer.

Selected Validation Data



Cytometric bead array standard curve of MP03174-1, SUFU Recombinant Matched Antibody Pair, PBS Only. Capture antibody: 87724-2-PBS. Detection antibody: 87724-1-PBS. Standard: Ag25193. Range: 0.312-40 ng/mL

The mean SUFU concentration was determined to be 2.0 ng/mL in HT-1080 cell extract based on a 1.5 mg/mL extract load, 4.4 ng/mL in HEK-293 cell extract based on a 1.2 mg/mL extract load, 0.2 ng/mL in Calu-3 cell extract based on a 1.2 mg/mL extract load.