

DKK3 Recombinant Matched Antibody Pair, PBS Only

Catalog Number:MP03175-1

Capture Antibody Information

Catalog Number:
87713-3-PBS

Host:
Rabbit

Isotype:
IgG

Purification Method:
Protein A purification

Clone ID:
253091F4

Reactivity:
human

Immunogen Catalog Number:
Eg6731

Conjugate:
Unconjugated

Full name:
dickkopf homolog 3 (Xenopus laevis)

Gene ID:
27122

Detection Antibody Information

Catalog Number:
87713-2-PBS

Host:
Rabbit

Isotype:
IgG

Purification Method:
Protein A purification

Clone ID:
253091F2

Reactivity:
human

GenBank:
NM_015881.5, NM_013253.4,
NM_001018057.1

Immunogen Catalog Number:
Eg6731

Conjugate:
Unconjugated

Full name:
dickkopf homolog 3 (Xenopus laevis)

Gene ID:
27122

Applications

Tested Applications:

Cytometric bead array, Sandwich ELISA

Range:

0.156-20 ng/mL (Cytometric Bead Array)
0.156-10 ng/mL (Sandwich ELISA)

Recommended Dilutions:

It is recommended that this reagent should be titrated in each testing system to obtain optimal results.

Product Information

MP03175-1 targets DKK3 in immunoassays as a matched antibody pair. Validated in Cytometric bead array, Sandwich ELISA.

Capture antibody: DKK3 Recombinant monoclonal antibody, PBS Only (Capture) 87713-3-PBS (253091F4). 100 µg. Concentration 1 mg/mL.

Detection antibody: DKK3 Recombinant monoclonal antibody, PBS Only (Detector) 87713-2-PBS (253091F2). 100 µg. Concentration 1 mg/mL.

Unconjugated rabbit recombinant monoclonal antibody pair in PBS only storage buffer at a concentration of 1 mg/mL, ready for conjugation. Created using Proteintech's proprietary in-house recombinant technology. Recombinant production enables unrivalled batch-to-batch consistency, easy scale-up, and future security of supply.

Matched antibody pairs are designed for use in a variety of assays and platforms that require matched antibody pairs.

Antibody use should be optimized for each application and assay.

Storage

Storage:
Store at -80°C.
Storage buffer:
PBS only

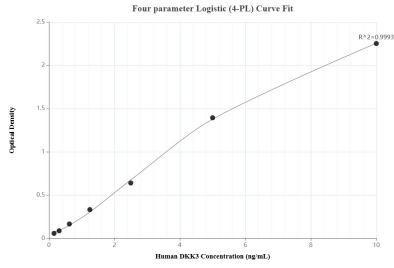
For technical support and original validation data for this product please contact:

T: 1 (888) 4PTGLAB (1-888-478-4522) (toll free in USA), or 1(312) 455-8498 (outside USA)

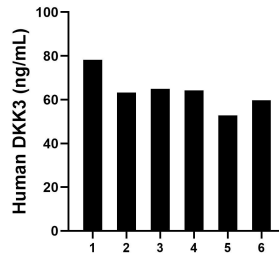
E: proteintech@ptglab.com
W: ptglab.com

This product is exclusively available under Proteintech Group brand and is not available to purchase from any other manufacturer.

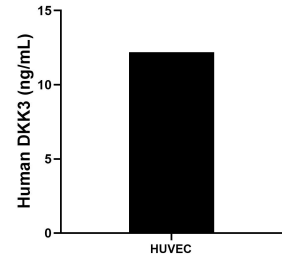
Selected Validation Data



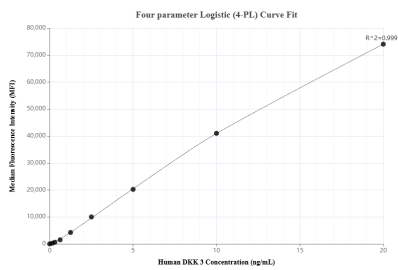
Sandwich ELISA standard curve of MP03175-1, Human DKK3 Recombinant Matched Antibody Pair - PBS only. 87713-3-PBS was coated to a plate as the capture antibody and incubated with serial dilutions of standard Eg6731. 87713-2-PBS was HRP conjugated as the detection antibody. Range: 0.156-10 ng/mL



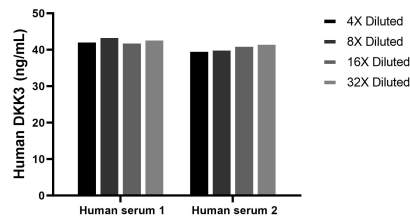
Plasma of six individual healthy human donors was measured. The human DKK3 concentration of detected samples was determined to be 63.82 ng/mL with a range of 52.74-78.16 ng/mL.



HUVEC human umbilical vein endothelial cells were cultured in EGM-2. Aliquots of the cell culture supernatants were removed, assayed for levels of DKK3, and measured 12.24 ng/mL



Cytometric bead array standard curve of MP03175-1, DKK3 Recombinant Matched Antibody Pair, PBS Only. Capture antibody: 87713-3-PBS. Detection antibody: 87713-2-PBS. Standard: Eg6731. Range: 0.156-20 ng/mL



The mean DKK3 concentration was determined to be 43.0 ng/mL in human serum 1, 41.0 ng/mL in human serum 2.