

For Research Use Only

Mouse IGF-II R/IGF2R Recombinant Matched Antibody Pair, PBS Only



Catalog Number:MP03179-2

Capture Antibody Information

Catalog Number:

87733-2-PBS

Host:

Rabbit

Isotype:

IgG

Purification Method:

Protein A purification

Clone ID:

253081C6

Reactivity:

mouse

Immunogen Catalog Number:

Eg6300

Conjugate:

Unconjugated

Full name:

insulin-like growth factor 2 receptor

Gene ID:

16004

Detection Antibody Information

Catalog Number:

87733-3-PBS

Host:

Rabbit

Isotype:

IgG

Purification Method:

Protein A purification

Clone ID:

253081E9

Reactivity:

mouse

GenBank:

NM_010515.2

Immunogen Catalog Number:

Eg6300

Conjugate:

Unconjugated

Full name:

insulin-like growth factor 2 receptor

Gene ID:

16004

Applications

Tested Applications:

Sandwich ELISA

Range:

0.391-25 ng/mL (Sandwich ELISA)

Recommended Dilutions:

It is recommended that this reagent should be titrated in each testing system to obtain optimal results.

Product Information

MP03179-2 targets IGF-II R/IGF2R in immunoassays as a matched antibody pair. Validated in Sandwich ELISA.

Capture antibody: Mouse CD222/Igf2r Recombinant monoclonal antibody, PBS Only (Capture) 87733-2-PBS (253081C6). 100 µg. Concentration 1 mg/mL.

Detection antibody: Mouse CD222/Igf2r Recombinant monoclonal antibody, PBS Only (Detector) 87733-3-PBS (253081E9). 100 µg. Concentration 1 mg/mL.

Unconjugated rabbit recombinant monoclonal antibody pair in PBS only storage buffer at a concentration of 1 mg/mL, ready for conjugation. Created using Proteintech's proprietary in-house recombinant technology. Recombinant production enables unrivalled batch-to-batch consistency, easy scale-up, and future security of supply.

Matched antibody pairs are designed for use in a variety of assays and platforms that require matched antibody pairs.

Antibody use should be optimized for each application and assay.

Storage

Storage:

Store at -80°C.

Storage buffer:

PBS only

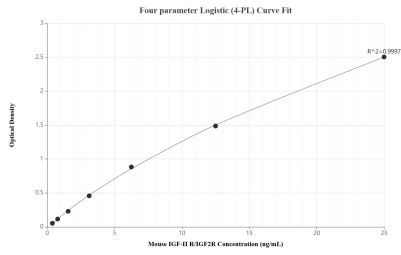
For technical support and original validation data for this product please contact:

T: 1 (888) 4PTGLAB (1-888-478-4522) (toll free in USA), or 1(312) 455-8498 (outside USA)

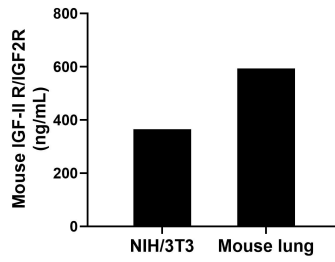
E: proteintech@ptglab.com
W: ptglab.com

This product is exclusively available under Proteintech Group brand and is not available to purchase from any other manufacturer.

Selected Validation Data



Sandwich ELISA standard curve of MP03179-2, Mouse IGF-II R/IGF2R Recombinant Matched Antibody Pair - PBS only. 87733-2-PBS was coated to a plate as the capture antibody and incubated with serial dilutions of standard Eg6300. 87733-3-PBS was HRP conjugated as the detection antibody. Range: 0.391-25 ng/mL



The mean IGF-II R/IGF2R concentration was determined to be 364.70 ng/mL in NIH/3T3 cell extract based on a 1.20 mg/mL extract load and 593.09 ng/mL in mouse lung extract based on a 5.00 mg/mL extract load.