

For Research Use Only

PSG1 Recombinant Matched Antibody Pair, PBS Only



Catalog Number:MP03180-2

Capture Antibody Information

Catalog Number:
87751-3-PBS
Host:
Rabbit
Isotype:
IgG
Purification Method:
Protein A purification

Clone ID:
253347A8
Reactivity:
human
Immunogen Catalog Number:
Eg3704

Conjugate:
Unconjugated
Full name:
pregnancy specific beta-1-glycoprotein 1
Gene ID:
5669

Detection Antibody Information

Catalog Number:
87751-1-PBS
Host:
Rabbit
Isotype:
IgG
Purification Method:
Protein A purification

Clone ID:
253347D11
Reactivity:
human
GenBank:
BC058285
Immunogen Catalog Number:
Eg3704

Conjugate:
Unconjugated
Full name:
pregnancy specific beta-1-glycoprotein 1
Gene ID:
5669

Applications

Tested Applications:
Sandwich ELISA

Range:
78.1-5000 pg/mL (Sandwich ELISA)

Recommended Dilutions:
It is recommended that this reagent should be titrated in each testing system to obtain optimal results.

Product Information

MP03180-2 targets PSG1 in immunoassays as a matched antibody pair. Validated in Sandwich ELISA.

Capture antibody: PSG1 Recombinant monoclonal antibody, PBS Only (Capture) 87751-3-PBS (253347A8). 100 µg. Concentration 1 mg/mL.

Detection antibody: PSG1 Recombinant monoclonal antibody, PBS Only (Detector) 87751-1-PBS (253347D11). 100 µg. Concentration 1 mg/mL.

Unconjugated rabbit recombinant monoclonal antibody pair in PBS only storage buffer at a concentration of 1 mg/mL, ready for conjugation. Created using Proteintech's proprietary in-house recombinant technology. Recombinant production enables unrivalled batch-to-batch consistency, easy scale-up, and future security of supply.

Matched antibody pairs are designed for use in a variety of assays and platforms that require matched antibody pairs.

Antibody use should be optimized for each application and assay.

Storage

Storage:
Store at -80°C.
Storage buffer:
PBS only

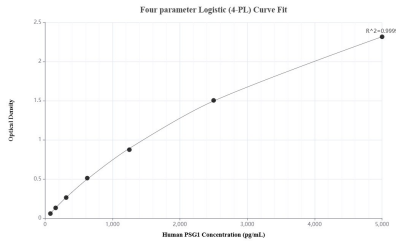
For technical support and original validation data for this product please contact:

T: 1 (888) 4PTGLAB (1-888-478-4522) (toll free in USA), or 1(312) 455-8498 (outside USA)

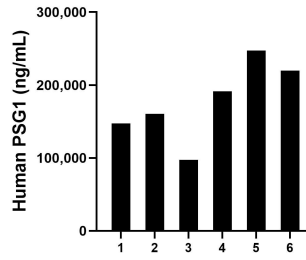
E: proteintech@ptglab.com
W: ptglab.com

This product is exclusively available under Proteintech Group brand and is not available to purchase from any other manufacturer.

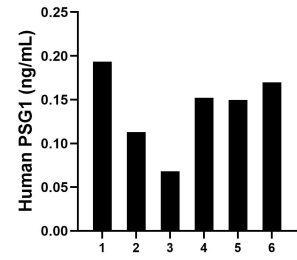
Selected Validation Data



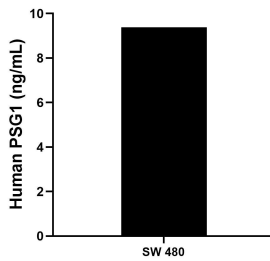
Sandwich ELISA standard curve of MP03180-2, Human PSG1 Recombinant Matched Antibody Pair - PBS only. 87751-3-PBS was coated to a plate as the capture antibody and incubated with serial dilutions of standard Eg3704. 87751-1-PBS was HRP conjugated as the detection antibody. Range: 78.1-5000 pg/mL



Plasma of six maternity donors was measured. The human PSG1 concentration of detected samples was determined to be 177,237.82 ng/mL with a range of 97,423.16- 247,176.92 ng/mL.



Plasma of six individual healthy human donors was measured. The human PSG1 concentration of detected samples was determined to be 0.14 ng/mL with a range of 0.11 - 0.19 ng/mL.



SW 480 cells were cultured in RPMI 1640 supplemented with 10% fetal bovine serum, 2 mM L-glutamine, 100 U/mL penicillin, and 100 µg/mL streptomycin sulfate. An aliquot of the culture supernatants were removed, assayed for levels of human PSG1, and measured 9.38 ng/mL.