

For Research Use Only

SDHB Recombinant Matched Antibody Pair, PBS Only



Catalog Number:MP03207-1

Capture Antibody Information

Catalog Number:

87791-2-PBS

Host:

Rabbit

Isotype:

IgG

Purification Method:

Protein A purification

Clone ID:

253361G2

Reactivity:

human

Immunogen Catalog Number:

Ag0968

Conjugate:

Unconjugated

Full name:

succinate dehydrogenase complex, subunit B, iron sulfur (Ip)

Gene ID:

6390

Detection Antibody Information

Catalog Number:

87791-3-PBS

Host:

Rabbit

Isotype:

IgG

Purification Method:

Protein A purification

Clone ID:

253361F10

Reactivity:

human

GenBank:

BC007840

Immunogen Catalog Number:

Ag0968

Conjugate:

Unconjugated

Full name:

succinate dehydrogenase complex, subunit B, iron sulfur (Ip)

Gene ID:

6390

Applications

Tested Applications:

Cytometric bead array

Range:

0.469-60 ng/mL (Cytometric Bead Array)

Recommended Dilutions:

It is recommended that this reagent should be titrated in each testing system to obtain optimal results.

Product Information

MP03207-1 targets SDHB in immunoassays as a matched antibody pair. Validated in Cytometric bead array.

Capture antibody: SDHB Recombinant monoclonal antibody, PBS Only (Capture) 87791-2-PBS (253361G2). 100 µg. Concentration 1 mg/mL.

Detection antibody: SDHB Recombinant monoclonal antibody, PBS Only (Detector) 87791-3-PBS (253361F10). 100 µg. Concentration 1 mg/mL.

Unconjugated rabbit recombinant monoclonal antibody pair in PBS only storage buffer at a concentration of 1 mg/mL, ready for conjugation. Created using Proteintech's proprietary in-house recombinant technology. Recombinant production enables unrivalled batch-to-batch consistency, easy scale-up, and future security of supply.

Matched antibody pairs are designed for use in a variety of assays and platforms that require matched antibody pairs.

Antibody use should be optimized for each application and assay.

Storage

Storage:

Store at -80°C.

Storage buffer:

PBS only

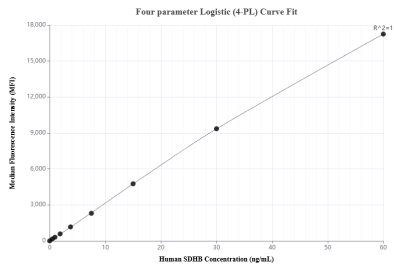
For technical support and original validation data for this product please contact:

T: 1 (888) 4PTGLAB (1-888-478-4522) (toll free in USA), or 1(312) 455-8498 (outside USA)

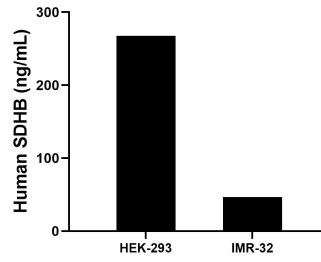
E: proteintech@ptglab.com
W: ptglab.com

This product is exclusively available under Proteintech Group brand and is not available to purchase from any other manufacturer.

Selected Validation Data



Cytometric bead array standard curve of MP03207-1, SDHB Recombinant Matched Antibody Pair, PBS Only. Capture antibody: 87791-2-PBS. Detection antibody: 87791-3-PBS. Standard: Ag0968. Range: 0.469-60 ng/mL



The mean SDHB concentration was determined to be 267.6 ng/mL in HEK-293 cell extract based on a 1.5 mg/mL extract load, 46.4 ng/mL in IMR-32 cell extract based on a 1.7 mg/mL extract load.