

For Research Use Only

# Mouse TGF-alpha Recombinant Matched Antibody Pair, PBS Only



Catalog Number:MP03210-1

## Capture Antibody Information

Catalog Number:  
87825-2-PBS

Host:  
Rabbit

Isotype:  
IgG

Purification Method:  
Protein A purification

Clone ID:  
252050D3

Reactivity:  
mouse

Immunogen Catalog Number:  
Eg6280

Conjugate:  
Unconjugated

Full name:  
transforming growth factor alpha

Gene ID:  
21802

## Detection Antibody Information

Catalog Number:  
87825-1-PBS

Host:  
Rabbit

Isotype:  
IgG

Purification Method:  
Protein A purification

Clone ID:  
252050C2

Reactivity:  
mouse

GenBank:  
NM\_031199.4

Immunogen Catalog Number:  
Eg6280

Conjugate:  
Unconjugated

Full name:  
transforming growth factor alpha

Gene ID:  
21802

## Applications

Tested Applications:  
Sandwich ELISA

Range:  
0.391-25 ng/mL (Sandwich ELISA)

Recommended Dilutions:  
It is recommended that this reagent should be titrated in each testing system to obtain optimal results.

## Product Information

MP03210-1 targets TGF-alpha in immunoassays as a matched antibody pair. Validated in Sandwich ELISA.

Capture antibody: Mouse TGF-alpha Recombinant monoclonal antibody, PBS Only (Capture) 87825-2-PBS (252050D3). 100 µg. Concentration 1 mg/mL.

Detection antibody: Mouse TGF-alpha Recombinant monoclonal antibody, PBS Only (Detector) 87825-1-PBS (252050C2). 100 µg. Concentration 1 mg/mL.

Unconjugated rabbit recombinant monoclonal antibody pair in PBS only storage buffer at a concentration of 1 mg/mL, ready for conjugation. Created using Proteintech's proprietary in-house recombinant technology. Recombinant production enables unrivalled batch-to-batch consistency, easy scale-up, and future security of supply.

Matched antibody pairs are designed for use in a variety of assays and platforms that require matched antibody pairs.

Antibody use should be optimized for each application and assay.

## Storage

Storage:  
Store at -80°C.  
Storage buffer:  
PBS only

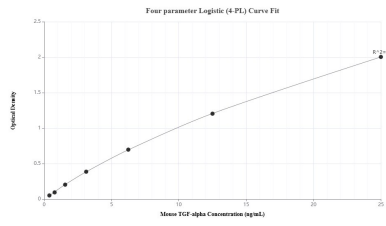
For technical support and original validation data for this product please contact:

T: 1 (888) 4PTGLAB (1-888-478-4522) (toll free in USA), or 1(312) 455-8498 (outside USA)

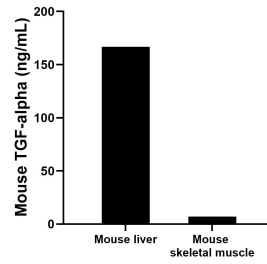
E: [proteintech@ptglab.com](mailto:proteintech@ptglab.com)  
W: [ptglab.com](http://ptglab.com)

**This product is exclusively available under Proteintech Group brand and is not available to purchase from any other manufacturer.**

## Selected Validation Data



Sandwich ELISA standard curve of MP03210-1, Mouse TGF-alpha Recombinant Matched Antibody Pair - PBS only. 87825-2-PBS was coated to a plate as the capture antibody and incubated with serial dilutions of standard Eg6280. 87825-1-PBS was HRP conjugated as the detection antibody. Range: 0.391-25 ng/mL



The mean TGF-alpha concentration was determined to be 166.90 ng/mL in mouse liver tissue extract based on a 8.4 mg/mL extract load and 7.03 ng/mL in mouse skeletal muscle tissue extract based on a 4.1 mg/mL extract load.