

For Research Use Only



# Mouse IL-13Ra1/CD213a1 Recombinant Matched Antibody Pair, PBS Only

Catalog Number:MP03221-1

## Capture Antibody Information

**Catalog Number:**

87816-2-PBS

**Host:**

Rabbit

**Isotype:**

IgG

**Purification Method:**

Protein A purification

**Clone ID:**

253331H5

**Reactivity:**

mouse

**Immunogen Catalog Number:**

Eg6217

**Conjugate:**

Unconjugated

**Full name:**

interleukin 13 receptor, alpha 1

**Gene ID:**

16164

## Detection Antibody Information

**Catalog Number:**

87816-1-PBS

**Host:**

Rabbit

**Isotype:**

IgG

**Purification Method:**

Protein A purification

**Clone ID:**

253331D8

**Reactivity:**

mouse

**GenBank:**

NM\_133990.5

**Immunogen Catalog Number:**

Eg6217

**Conjugate:**

Unconjugated

**Full name:**

interleukin 13 receptor, alpha 1

**Gene ID:**

16164

## Applications

**Tested Applications:**

Cytometric bead array

**Range:**

0.312-40 ng/mL (Cytometric Bead Array)

**Recommended Dilutions:**

It is recommended that this reagent should be titrated in each testing system to obtain optimal results.

## Product Information

MP03221-1 targets IL-13Ra1/CD213a1 in immunoassays as a matched antibody pair. Validated in Cytometric bead array.

Capture antibody: Mouse IL13ra1 Recombinant monoclonal antibody, PBS Only (Capture) 87816-2-PBS (253331H5). 100 µg. Concentration 1 mg/ml.

Detection antibody: Mouse IL13ra1 Recombinant monoclonal antibody, PBS Only (Detector) 87816-1-PBS (253331D8). 100 µg. Concentration 1 mg/ml.

Unconjugated rabbit recombinant monoclonal antibody pair in PBS only storage buffer at a concentration of 1 mg/mL, ready for conjugation. Created using Proteintech's proprietary in-house recombinant technology. Recombinant production enables unrivalled batch-to-batch consistency, easy scale-up, and future security of supply.

Matched antibody pairs are designed for use in a variety of assays and platforms that require matched antibody pairs.

Antibody use should be optimized for each application and assay.

## Storage

**Storage:**

Store at -80°C.

**Storage buffer:**

PBS only

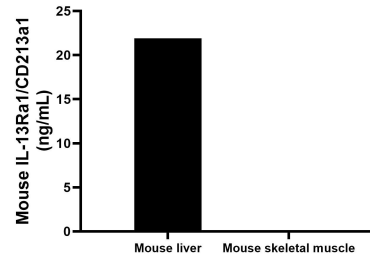
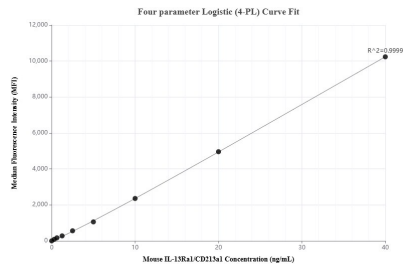
For technical support and original validation data for this product please contact:

T: 1 (888) 4PTGLAB (1-888-478-4522) (toll free in USA), or 1(312) 455-8498 (outside USA)

E: [proteintech@ptglab.com](mailto:proteintech@ptglab.com)  
W: [ptglab.com](http://ptglab.com)

**This product is exclusively available under Proteintech Group brand and is not available to purchase from any other manufacturer.**

## Selected Validation Data



Cytometric bead array standard curve of MP03221-1, MOUSE IL-13Ra1/CD213a1 Recombinant Matched Antibody Pair, PBS Only. Capture antibody: 87816-2-PBS. Detection antibody: 87816-1-PBS. Standard: Eg6217. Range: 0.312-40 ng/mL

The mean IL-13Ra1/CD213a1 concentration was determined to be 21.9 ng/mL in mouse liver tissue extract based on a 8.4 mg/mL extract load, mouse skeletal muscle tissue extract were served as a negative control.