

For Research Use Only

# BMI1 Recombinant Matched Antibody Pair, PBS Only



Catalog Number:MP03232-2

## Capture Antibody Information

Catalog Number:  
87836-4-PBS

Host:  
Rabbit

Isotype:  
IgG

Purification Method:  
Protein A purification

Clone ID:  
253339E6

Reactivity:  
human

Immunogen Catalog Number:  
Ag1286

Conjugate:  
Unconjugated

Full name:  
BMI1 polycomb ring finger oncogene

Gene ID:  
648

## Detection Antibody Information

Catalog Number:  
87836-2-PBS

Host:  
Rabbit

Isotype:  
IgG

Purification Method:  
Protein A purification

Clone ID:  
253339H4

Reactivity:  
human

GenBank:  
BC011652

Immunogen Catalog Number:  
Ag1286

Conjugate:  
Unconjugated

Full name:  
BMI1 polycomb ring finger oncogene

Gene ID:  
648

## Applications

Tested Applications:  
Sandwich ELISA

Range:  
0.156-10 ng/mL (Sandwich ELISA)

Recommended Dilutions:  
It is recommended that this reagent should be titrated in each testing system to obtain optimal results.

## Product Information

MP03232-2 targets BMI1 in immunoassays as a matched antibody pair. Validated in Sandwich ELISA.

Capture antibody: BMI1 Recombinant monoclonal antibody, PBS Only (Capture) 87836-4-PBS (253339E6). 100 µg. Concentration 1 mg/mL.

Detection antibody: BMI1 Recombinant monoclonal antibody, PBS Only (Detector) 87836-2-PBS (253339H4). 100 µg. Concentration 1 mg/mL.

Unconjugated rabbit recombinant monoclonal antibody pair in PBS only storage buffer at a concentration of 1 mg/mL, ready for conjugation. Created using Proteintech's proprietary in-house recombinant technology. Recombinant production enables unrivalled batch-to-batch consistency, easy scale-up, and future security of supply.

Matched antibody pairs are designed for use in a variety of assays and platforms that require matched antibody pairs.

Antibody use should be optimized for each application and assay.

## Storage

Storage:  
Store at -80°C.  
Storage buffer:  
PBS only

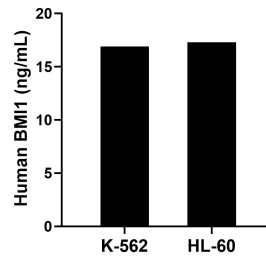
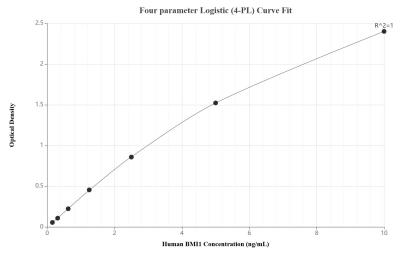
For technical support and original validation data for this product please contact:

T: 1 (888) 4PTGLAB (1-888-478-4522) (toll free in USA), or 1(312) 455-8498 (outside USA)

E: [proteintech@ptglab.com](mailto:proteintech@ptglab.com)  
W: [ptglab.com](http://ptglab.com)

This product is exclusively available under Proteintech Group brand and is not available to purchase from any other manufacturer.

## Selected Validation Data



Sandwich ELISA standard curve of MP03232-2, Human BMI1 Recombinant Matched Antibody Pair - PBS only. 87836-4-PBS was coated to a plate as the capture antibody and incubated with serial dilutions of standard Ag1286. 87836-2-PBS was HRP conjugated as the detection antibody. Range: 0.156-10 ng/mL

The mean BMI1 concentration was determined to be 16.90 ng/mL in K-562 cell extract based on a 1.20 mg/mL extract load and 17.30 ng/mL in HL-60 cell extract based on a 1.50 mg/mL extract load.