

For Research Use Only

MIS18A Recombinant Matched Antibody Pair, PBS Only



Catalog Number:MP03248-1

Capture Antibody Information

Catalog Number:
87900-3-PBS

Host:
Rabbit

Isotype:
IgG

Purification Method:
Protein A purification

Clone ID:
260121B5

Reactivity:
human

Immunogen Catalog Number:
Ag22922

Conjugate:
Unconjugated

Full name:
chromosome 21 open reading frame
45

Gene ID:
54069

Detection Antibody Information

Catalog Number:
87900-2-PBS

Host:
Rabbit

Isotype:
IgG

Purification Method:
Protein A purification

Clone ID:
260121A4

Reactivity:
human

GenBank:
BC042917

Immunogen Catalog Number:
Ag22922

Conjugate:
Unconjugated

Full name:
chromosome 21 open reading frame
45

Gene ID:
54069

Applications

Tested Applications:
Cytometric bead array

Range:
0.781-100 ng/mL (Cytometric Bead
Array)

Recommended Dilutions:
It is recommended that this reagent
should be titrated in each testing
system to obtain optimal results.

Product Information

MP03248-1 targets MIS18A in immunoassays as a matched antibody pair. Validated in Cytometric bead array.

Capture antibody: C21orf45 Recombinant monoclonal antibody, PBS Only (Capture) 87900-3-PBS (260121B5). 100 µg. Concentration 1 mg/mL.

Detection antibody: C21orf45 Recombinant monoclonal antibody, PBS Only (Detector) 87900-2-PBS (260121A4). 100 µg. Concentration 1 mg/mL.

Unconjugated rabbit recombinant monoclonal antibody pair in PBS only storage buffer at a concentration of 1 mg/mL, ready for conjugation. Created using Proteintech's proprietary in-house recombinant technology. Recombinant production enables unrivalled batch-to-batch consistency, easy scale-up, and future security of supply.

Matched antibody pairs are designed for use in a variety of assays and platforms that require matched antibody pairs.

Antibody use should be optimized for each application and assay.

Storage

Storage:
Store at -80°C.
Storage buffer:
PBS only

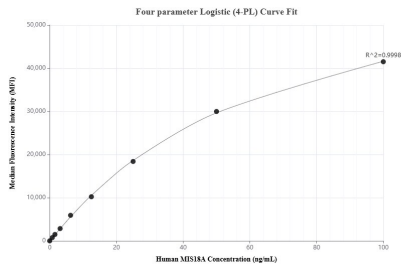
For technical support and original validation data for this product please contact:

T: 1 (888) 4PTGLAB (1-888-478-4522) (toll free
in USA), or 1(312) 455-8498 (outside USA)

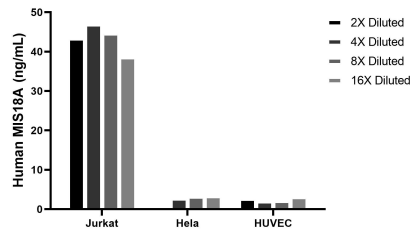
E: proteintech@ptglab.com
W: ptglab.com

This product is exclusively available under Proteintech Group brand and is not available to purchase from any other manufacturer.

Selected Validation Data



Cytometric bead array standard curve of MP03248-1, MIS18A Recombinant Matched Antibody Pair, PBS Only. Capture antibody: 87900-3-PBS. Detection antibody: 87900-2-PBS. Standard: Ag22922. Range: 0.781-100 ng/mL.



The mean MIS18A concentration was determined to be 43.3 ng/mL in Jurkat cell extract based on a 1.2 mg/mL extract load, 3.1 ng/mL in HeLa cell extract based on a 1.2 mg/mL extract load, 2.5 ng/mL in HUVEC cell extract based on a 1.2 mg/mL extract load.