

For Research Use Only

# Mouse CD298/ATP1B3 Recombinant Matched Antibody Pair, PBS Only



Catalog Number:MP03255-1

## Capture Antibody Information

Catalog Number:

87906-4-PBS

Host:

Rabbit

Isotype:

IgG

Purification Method:

Protein A purification

Clone ID:

260040C3

Reactivity:

mouse

Immunogen Catalog Number:

Eg8917

Conjugate:

Unconjugated

Full name:

ATPase, Na<sup>+</sup>/K<sup>+</sup> transporting, beta 3 polypeptide

Gene ID:

11933

## Detection Antibody Information

Catalog Number:

87906-3-PBS

Host:

Rabbit

Isotype:

IgG

Purification Method:

Protein A purification

Clone ID:

260040D7

Reactivity:

mouse

GenBank:

NM\_007502.6

Immunogen Catalog Number:

Eg8917

Conjugate:

Unconjugated

Full name:

ATPase, Na<sup>+</sup>/K<sup>+</sup> transporting, beta 3 polypeptide

Gene ID:

11933

## Applications

Tested Applications:

Cytometric bead array

Range:

1.562-200 ng/mL (Cytometric Bead Array)

Recommended Dilutions:

It is recommended that this reagent should be titrated in each testing system to obtain optimal results.

## Product Information

MP03255-1 targets CD298/ATP1B3 in immunoassays as a matched antibody pair. Validated in Cytometric bead array.

Capture antibody: Mouse CD298/ATP1B3 Recombinant monoclonal antibody, PBS Only (Capture) 87906-4-PBS (260040C3). 100 µg. Concentration 1 mg/ml.

Detection antibody: Mouse CD298/ATP1B3 Recombinant monoclonal antibody, PBS Only (Detector) 87906-3-PBS (260040D7). 100 µg. Concentration 1 mg/ml.

Unconjugated rabbit recombinant monoclonal antibody pair in PBS only storage buffer at a concentration of 1 mg/mL, ready for conjugation. Created using Proteintech's proprietary in-house recombinant technology. Recombinant production enables unrivalled batch-to-batch consistency, easy scale-up, and future security of supply.

Matched antibody pairs are designed for use in a variety of assays and platforms that require matched antibody pairs.

Antibody use should be optimized for each application and assay.

## Storage

Storage:

Store at -80°C.

Storage buffer:

PBS only

For technical support and original validation data for this product please contact:

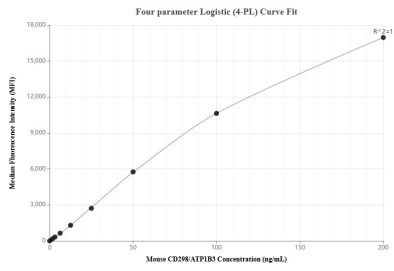
T: 1 (888) 4PTGLAB (1-888-478-4522) (toll free in USA), or 1(312) 455-8498 (outside USA)

E: [proteintech@ptglab.com](mailto:proteintech@ptglab.com)

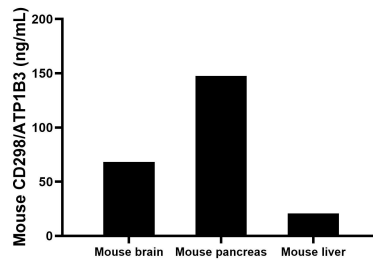
W: [ptglab.com](http://ptglab.com)

This product is exclusively available under Proteintech Group brand and is not available to purchase from any other manufacturer.

## Selected Validation Data



Cytometric bead array standard curve of MP03255-1, MOUSE CD298/ATP1B3 Recombinant Matched Antibody Pair, PBS Only. Capture antibody: 87906-4-PBS. Detection antibody: 87906-3-PBS. Standard: Eg8917. Range: 1.562-200 ng/mL



The mean CD298/ATP1B3 concentration was determined to be 68.3 ng/mL in mouse brain tissue extract based on a 1.0 mg/mL extract load, 147.6 ng/mL in mouse pancreas tissue extract based on a 1.0 mg/mL extract load, 20.8 ng/mL in mouse liver tissue extract based on a 1.0 mg/mL extract load.