

For Research Use Only

# CCDC88C Recombinant Matched Antibody Pair, PBS Only



Catalog Number:MP03275-1

## Capture Antibody Information

Catalog Number:

87946-3-PBS

Host:

Rabbit

Isotype:

IgG

Purification Method:

Protein A purification

Clone ID:

260135B7

Reactivity:

human

Immunogen Catalog Number:

Ag22711

Conjugate:

Unconjugated

Full name:

coiled-coil domain containing 88C

Gene ID:

440193

## Detection Antibody Information

Catalog Number:

87946-2-PBS

Host:

Rabbit

Isotype:

IgG

Purification Method:

Protein A purification

Clone ID:

260135A11

Reactivity:

human

GenBank:

BC028565

Immunogen Catalog Number:

Ag22711

Conjugate:

Unconjugated

Full name:

coiled-coil domain containing 88C

Gene ID:

440193

## Applications

Tested Applications:

Cytometric bead array

Range:

0.156-20 ng/mL (Cytometric Bead Array)

Recommended Dilutions:

It is recommended that this reagent should be titrated in each testing system to obtain optimal results.

## Product Information

MP03275-1 targets CCDC88C in immunoassays as a matched antibody pair. Validated in Cytometric bead array.

Capture antibody: CCDC88C Recombinant monoclonal antibody, PBS Only (Capture) 87946-3-PBS (260135B7). 100 µg. Concentration 1 mg/mL.

Detection antibody: CCDC88C Recombinant monoclonal antibody, PBS Only (Detector) 87946-2-PBS (260135A11). 100 µg. Concentration 1 mg/mL.

Unconjugated rabbit recombinant monoclonal antibody pair in PBS only storage buffer at a concentration of 1 mg/mL, ready for conjugation. Created using Proteintech's proprietary in-house recombinant technology. Recombinant production enables unrivalled batch-to-batch consistency, easy scale-up, and future security of supply.

Matched antibody pairs are designed for use in a variety of assays and platforms that require matched antibody pairs.

Antibody use should be optimized for each application and assay.

## Storage

Storage:

Store at -80°C.

Storage buffer:

PBS only

For technical support and original validation data for this product please contact:

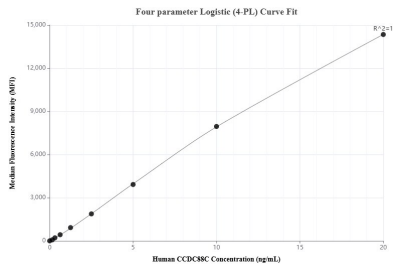
T: 1 (888) 4PTGLAB (1-888-478-4522) (toll free in USA), or 1(312) 455-8498 (outside USA)

E: [proteintech@ptglab.com](mailto:proteintech@ptglab.com)

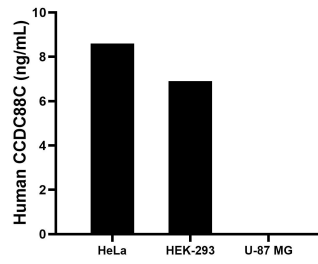
W: [ptglab.com](http://ptglab.com)

This product is exclusively available under Proteintech Group brand and is not available to purchase from any other manufacturer.

## Selected Validation Data



Cytometric bead array standard curve of MP03275-1, CCDC88C Recombinant Matched Antibody Pair, PBS Only. Capture antibody: 87946-3-PBS. Detection antibody: 87946-2-PBS. Standard: Ag22711. Range: 0.156-20 ng/mL.



The mean CCDC88C concentration was determined to be 8.6 ng/mL in HeLa cell extract based on a 1.2 mg/mL extract load, 6.9 ng/mL in HEK-293 cell extract based on a 1.5 mg/mL extract load, U-87 MG cell extract were served as a negative control.