

For Research Use Only

# ADI1 Recombinant Matched Antibody Pair, PBS Only



Catalog Number:MP03295-1

## Capture Antibody Information

Catalog Number:  
87964-4-PBS

Host:  
Rabbit

Isotype:  
IgG

Purification Method:  
Protein A purification

Clone ID:  
260044D4

Reactivity:  
human

Immunogen Catalog Number:  
Eg5924

Conjugate:  
Unconjugated

Full name:  
acireductone dioxygenase 1

Gene ID:  
55256

## Detection Antibody Information

Catalog Number:  
87964-3-PBS

Host:  
Rabbit

Isotype:  
IgG

Purification Method:  
Protein A purification

Clone ID:  
260044C2

Reactivity:  
human

GenBank:  
NM\_018269.3

Immunogen Catalog Number:  
Eg5924

Conjugate:  
Unconjugated

Full name:  
acireductone dioxygenase 1

Gene ID:  
55256

## Applications

Tested Applications:  
Cytometric bead array

Range:  
0.156-20 ng/mL (Cytometric Bead Array)

Recommended Dilutions:  
It is recommended that this reagent should be titrated in each testing system to obtain optimal results.

## Product Information

MP03295-1 targets ADI1 in immunoassays as a matched antibody pair. Validated in Cytometric bead array.

Capture antibody: ADI1 Recombinant monoclonal antibody, PBS Only (Capture) 87964-4-PBS (260044D4). 100 µg. Concentration 1 mg/mL.

Detection antibody: ADI1 Recombinant monoclonal antibody, PBS Only (Detector) 87964-3-PBS (260044C2). 100 µg. Concentration 1 mg/mL.

Unconjugated rabbit recombinant monoclonal antibody pair in PBS only storage buffer at a concentration of 1 mg/mL, ready for conjugation. Created using Proteintech's proprietary in-house recombinant technology. Recombinant production enables unrivalled batch-to-batch consistency, easy scale-up, and future security of supply.

Matched antibody pairs are designed for use in a variety of assays and platforms that require matched antibody pairs.

Antibody use should be optimized for each application and assay.

## Storage

Storage:  
Store at -80°C.  
Storage buffer:  
PBS only

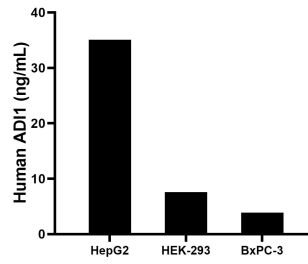
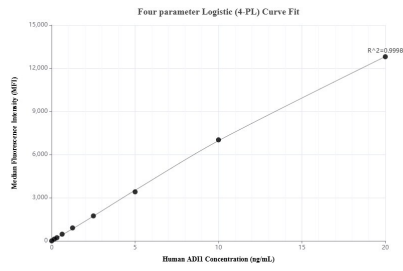
For technical support and original validation data for this product please contact:

T: 1 (888) 4PTGLAB (1-888-478-4522) (toll free in USA), or 1(312) 455-8498 (outside USA)

E: proteintech@ptglab.com  
W: ptglab.com

This product is exclusively available under Proteintech Group brand and is not available to purchase from any other manufacturer.

## Selected Validation Data



Cytometric bead array standard curve of MP03295-1, ADI1 Recombinant Matched Antibody Pair, PBS Only. Capture antibody: 87964-4-PBS. Detection antibody: 87964-3-PBS. Standard: Eg5924. Range: 0.156-20 ng/mL

The mean ADI1 concentration was determined to be 35.1 ng/mL in HepG2 cell extract based on a 1.2 mg/mL extract load, 7.6 ng/mL in HEK-293 cell extract based on a 1.5 mg/mL extract load, 3.9 ng/mL in BxPC-3 cell extract based on a 1.2 mg/mL extract load.