

For Research Use Only

PRKACA Recombinant Matched Antibody Pair, PBS Only



Catalog Number:MP03319-1

Capture Antibody Information

Catalog Number:

88029-3-PBS

Host:

Rabbit

Isotype:

IgG

Purification Method:

Protein A purification

Clone ID:

260253D10

Reactivity:

human

Immunogen Catalog Number:

Ag26392

Conjugate:

Unconjugated

Full name:

protein kinase, cAMP-dependent, catalytic, alpha

Gene ID:

5566

Detection Antibody Information

Catalog Number:

88029-2-PBS

Host:

Rabbit

Isotype:

IgG

Purification Method:

Protein A purification

Clone ID:

260253F1

Reactivity:

human

GenBank:

BC039846

Immunogen Catalog Number:

Ag26392

Conjugate:

Unconjugated

Full name:

protein kinase, cAMP-dependent, catalytic, alpha

Gene ID:

5566

Applications

Tested Applications:

Cytometric bead array

Range:

0.469-30 ng/mL (Cytometric Bead Array)

Recommended Dilutions:

It is recommended that this reagent should be titrated in each testing system to obtain optimal results.

Product Information

MP03319-1 targets PRKACA in immunoassays as a matched antibody pair. Validated in Cytometric bead array.

Capture antibody: PRKACA Recombinant monoclonal antibody, PBS Only (Capture) 88029-3-PBS (260253D10). 100 µg. Concentration 1 mg/mL.

Detection antibody: PRKACA Recombinant monoclonal antibody, PBS Only (Detector) 88029-2-PBS (260253F1). 100 µg. Concentration 1 mg/mL.

Unconjugated rabbit recombinant monoclonal antibody pair in PBS only storage buffer at a concentration of 1 mg/mL, ready for conjugation. Created using Proteintech's proprietary in-house recombinant technology. Recombinant production enables unrivalled batch-to-batch consistency, easy scale-up, and future security of supply.

Matched antibody pairs are designed for use in a variety of assays and platforms that require matched antibody pairs.

Antibody use should be optimized for each application and assay.

Storage

Storage:

Store at -80°C.

Storage buffer:

PBS only

For technical support and original validation data for this product please contact:

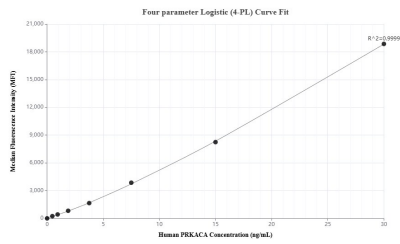
T: 1 (888) 4PTGLAB (1-888-478-4522) (toll free in USA), or 1(312) 455-8498 (outside USA)

E: proteintech@ptglab.com

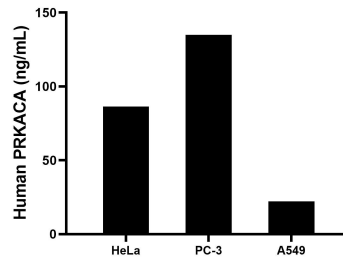
W: ptglab.com

This product is exclusively available under Proteintech Group brand and is not available to purchase from any other manufacturer.

Selected Validation Data



Cytometric bead array standard curve of MP03319-1, PRKACA Recombinant Matched Antibody Pair, PBS Only. Capture antibody: 88029-3-PBS. Detection antibody: 88029-2-PBS. Standard: Ag26392. Range: 0.469-30 ng/mL



The mean TRIP4 concentration was determined to be 86.3 ng/mL in HeLa cell extract based on a 1.2 mg/mL extract load, 134.9 ng/mL in PC-3 cell extract based on a 1.2 mg/mL extract load, 22.2 ng/mL in A549 cell extract based on a 1.2 mg/mL extract load.