

For Research Use Only

P21 Recombinant Matched Antibody Pair, PBS Only



Catalog Number:MP03418-1

Capture Antibody Information

Catalog Number:
82669-6-PBS
Host:
Rabbit
Isotype:
IgG
Purification Method:
Protein A purification

Clone ID:
260720D2
Reactivity:
human
Immunogen Catalog Number:
Eg4802

Conjugate:
Unconjugated
Full name:
cyclin-dependent kinase inhibitor 1A (p21, Cip1)
Gene ID:
1026

Detection Antibody Information

Catalog Number:
82669-5-PBS
Host:
Rabbit
Isotype:
IgG
Purification Method:
Protein A purification

Clone ID:
260720G12
Reactivity:
human
GenBank:
BC000312
Immunogen Catalog Number:
Eg4802

Conjugate:
Unconjugated
Full name:
cyclin-dependent kinase inhibitor 1A (p21, Cip1)
Gene ID:
1026

Applications

Tested Applications:
Cytometric bead array

Range:
0.781-100 ng/mL (Cytometric Bead Array)

Recommended Dilutions:
It is recommended that this reagent should be titrated in each testing system to obtain optimal results.

Product Information

MP03418-1 targets P21 in immunoassays as a matched antibody pair. Validated in Cytometric bead array.

Capture antibody: P21 Recombinant monoclonal antibody, PBS Only (Capture) 82669-6-PBS (260720D2). 100 µg. Concentration 1 mg/mL.

Detection antibody: P21 Recombinant monoclonal antibody, PBS Only (Detector) 82669-5-PBS (260720G12). 100 µg. Concentration 1 mg/mL.

Unconjugated rabbit recombinant monoclonal antibody pair in PBS only storage buffer at a concentration of 1 mg/mL, ready for conjugation. Created using Proteintech's proprietary in-house recombinant technology. Recombinant production enables unrivalled batch-to-batch consistency, easy scale-up, and future security of supply.

Matched antibody pairs are designed for use in a variety of assays and platforms that require matched antibody pairs.

Antibody use should be optimized for each application and assay.

Storage

Storage:
Store at -80°C.
Storage buffer:
PBS only

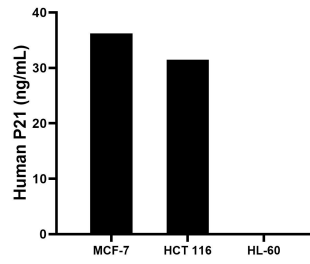
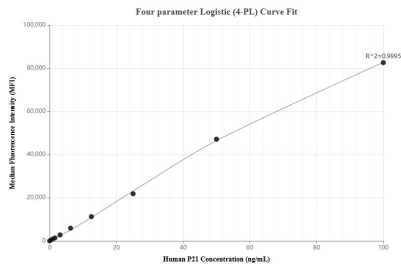
For technical support and original validation data for this product please contact:

T: 1 (888) 4PTGLAB (1-888-478-4522) (toll free in USA), or 1(312) 455-8498 (outside USA)

E: proteintech@ptglab.com
W: ptglab.com

This product is exclusively available under Proteintech Group brand and is not available to purchase from any other manufacturer.

Selected Validation Data



Cytometric bead array standard curve of MP03418-1, P21 Recombinant Matched Antibody Pair, PBS Only. Capture antibody: 82669-6-PBS. Detection antibody: 82669-5-PBS. Standard: Eg4802. Range: 0.781-100 ng/mL.

The mean P21 concentration was determined to be 36.2 ng/mL in MCF-7 cell extract based on a 1.0 mg/mL extract load, 31.5 ng/mL in HCT 116 cell extract based on a 1.0 mg/mL extract load, HL-60 cell extract were served as a negative control.