

For Research Use Only

# Mouse CD133 Recombinant Matched Antibody Pair, PBS Only



Catalog Number:MP03469-1

## Capture Antibody Information

Catalog Number:  
88061-3-PBS

Host:  
Rabbit

Isotype:  
IgG

Purification Method:  
Protein A purification

Clone ID:  
253117B5

Reactivity:  
mouse

Conjugate:  
Unconjugated

Full name:  
prominin 1

Gene ID:  
19126

## Detection Antibody Information

Catalog Number:  
88061-2-PBS

Host:  
Rabbit

Isotype:  
IgG

Purification Method:  
Protein A purification

Clone ID:  
253117D2

Reactivity:  
mouse

GenBank:  
BC028286

Conjugate:  
Unconjugated

Full name:  
prominin 1

Gene ID:  
19126

## Applications

Tested Applications:  
Sandwich ELISA

Range:  
78.1-5000 pg/mL (Sandwich ELISA)

Recommended Dilutions:  
It is recommended that this reagent should be titrated in each testing system to obtain optimal results.

## Product Information

MP03469-1 targets CD133 in immunoassays as a matched antibody pair. Validated in Sandwich ELISA.

Capture antibody: Mouse Prom1 Recombinant monoclonal antibody, PBS Only (Capture) 88061-3-PBS (253117B5). 100 µg. Concentration 1 mg/mL.

Detection antibody: Mouse Prom1 Recombinant monoclonal antibody, PBS Only (Detector) 88061-2-PBS (253117D2). 100 µg. Concentration 1 mg/mL.

Unconjugated rabbit recombinant monoclonal antibody pair in PBS only storage buffer at a concentration of 1 mg/mL, ready for conjugation. Created using Proteintech's proprietary in-house recombinant technology. Recombinant production enables unrivalled batch-to-batch consistency, easy scale-up, and future security of supply.

Matched antibody pairs are designed for use in a variety of assays and platforms that require matched antibody pairs.

Antibody use should be optimized for each application and assay.

## Storage

Storage:  
Store at -80°C.  
Storage buffer:  
PBS only

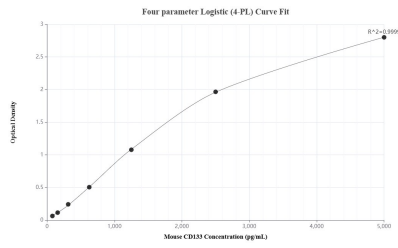
For technical support and original validation data for this product please contact:

T: 1 (888) 4PTGLAB (1-888-478-4522) (toll free in USA), or 1(312) 455-8498 (outside USA)

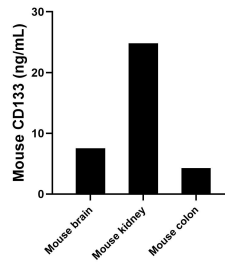
E: [proteintech@ptglab.com](mailto:proteintech@ptglab.com)  
W: [ptglab.com](http://ptglab.com)

This product is exclusively available under Proteintech Group brand and is not available to purchase from any other manufacturer.

## Selected Validation Data



Sandwich ELISA standard curve of MP03469-1, Mouse CD133 Recombinant Matched Antibody Pair - PBS only. 88061-3-PBS was coated to a plate as the capture antibody and incubated with serial dilutions of standard SY03044. 88061-2-PBS was HRP conjugated as the detection antibody. Range: 78.1-5000 pg/mL



The mean CD133 concentration was determined to be 7.55 ng/mL in mouse brain tissue extract based on a 6.3 mg/mL extract load, 24.81 ng/mL in mouse kidney tissue extract based on a 8.5 mg/mL extract load and 4.29 ng/mL in mouse colon tissue extract based on a 4.9 mg/mL extract load.