

For Research Use Only

IL-29 Monoclonal Matched Antibody Pair, PBS Only



Catalog Number:MP50009-1

Capture Antibody Information

Catalog Number:
66163-1-PBS

Host:
Mouse

Isotype:
IgG1

Purification Method:
Protein G purification

Clone ID:
1H3A3

Reactivity:
human

Immunogen Catalog Number:
Ag12444

Conjugate:
Unconjugated

Full name:
interleukin 29 (interferon, lambda 1)

Gene ID:
282618

Detection Antibody Information

Catalog Number:
68671-1-PBS

Host:
Mouse

Isotype:
IgG1

Purification Method:
Protein G purification

Clone ID:
1F1G5

Reactivity:
human

GenBank:
Immunogen Catalog Number:

HZ-1156

Conjugate:
Unconjugated

Full name:
interleukin 29 (interferon, lambda 1)

Gene ID:
282618

Applications

Tested Applications:
Sandwich ELISA

Range:
62.5-4000 pg/mL (Sandwich ELISA)

Recommended Dilutions:
It is recommended that this reagent should be titrated in each testing system to obtain optimal results.

Product Information

MP50009-1 targets IL-29 in immunoassays as a matched antibody pair. Validated in Sandwich ELISA.

Capture antibody: IL-29 Monoclonal antibody, PBS Only (Capture) 66163-1-PBS (1H3A3). 100 µg. Concentration 1 mg/mL.

Detection antibody: IL-29 Monoclonal antibody, PBS Only (Detector) 68671-1-PBS (1F1G5). 100 µg. Concentration 1 mg/mL.

Unconjugated mouse monoclonal antibody pair in PBS only storage buffer at a concentration of 1 mg/mL, ready for conjugation.

Matched antibody pairs are designed for use in a variety of assays and platforms that require matched antibody pairs.

Antibody use should be optimized for each application and assay.

Storage

Storage:
Store at -80°C.
Storage buffer:
PBS only

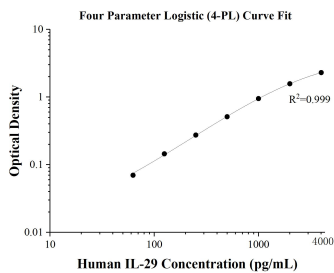
For technical support and original validation data for this product please contact:

T: 1 (888) 4PTGLAB (1-888-478-4522) (toll free in USA), or 1(312) 455-8498 (outside USA)

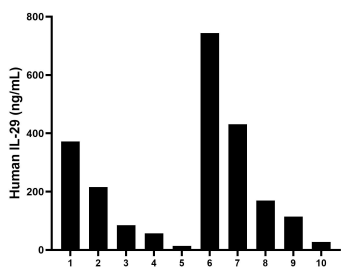
E: proteintech@ptglab.com
W: ptglab.com

This product is exclusively available under Proteintech Group brand and is not available to purchase from any other manufacturer.

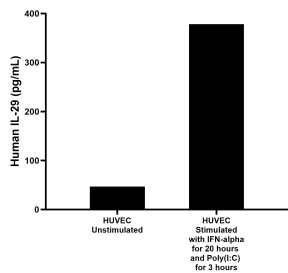
Selected Validation Data



Sandwich ELISA standard curve of MP50009-1, IL-29 Monoclonal Matched Antibody Pair, PBS Only. Capture antibody: 66163-1-PBS. Detection antibody: 68671-1-PBS. Standard: HZ-1156. Range: 62.5-4000 pg/mL.



Serum of ten individual healthy human donors was measured. The human IL-29 concentration of detected samples was determined to be 185.8 pg/mL with a range of 13.7 - 744.0 pg/mL.



HUVEC human umbilical vein endothelial cells were cultured in EGM-2 and stimulated with 100 ng/mL IFN-alpha for 20 hours and 30 µg/mL Poly(I:C) for 3 hours. The mean IL-29 concentration was determined to be 46.8 pg/mL in unstimulated HUVEC supernatant, 378.1 pg/mL in stimulated HUVEC supernatant.