

# Albumin Monoclonal Matched Antibody Pair, PBS Only

Catalog Number: **MP50031-1**

## Capture Antibody Information

Catalog Number:  
66051-2-PBS

Host:  
Mouse

Isotype:  
IgG1

Purification Method:  
Protein G purification

Clone ID:  
5E6B5

Reactivity:  
human

Immunogen Catalog Number:  
Ag9885

Conjugate:  
Unconjugated

Full name:  
albumin

Gene ID:  
213

## Detection Antibody Information

Catalog Number:  
66051-1-PBS

Host:  
Mouse

Isotype:  
IgG1

Purification Method:  
Protein G purification

Clone ID:  
4A1C11

Reactivity:  
human, rat, pig

GenBank:  
BC034023

Immunogen Catalog Number:  
Ag9885

Conjugate:  
Unconjugated

Full name:  
albumin

Gene ID:  
213

## Applications

Tested Applications:  
Sandwich ELISA

Range:  
50-3200 ng/mL (Sandwich ELISA)

Recommended Dilutions:  
It is recommended that this reagent should be titrated in each testing system to obtain optimal results.

## Product Information

MP50031-1 targets Albumin in immunoassays as a matched antibody pair. Validated in Sandwich ELISA.

Capture antibody: Albumin Monoclonal antibody, PBS Only (Capture) 66051-2-PBS (5E6B5). 100 µg. Concentration 1 mg/mL.

Detection antibody: Albumin Monoclonal antibody, PBS Only (Detector) 66051-1-PBS (4A1C11). 100 µg. Concentration 1 mg/mL.

Unconjugated mouse monoclonal antibody pair in PBS only storage buffer at a concentration of 1 mg/mL, ready for conjugation.

Matched antibody pairs are designed for use in a variety of assays and platforms that require matched antibody pairs.

Antibody use should be optimized for each application and assay.

## Storage

Storage:  
Store at -80°C.  
Storage buffer:  
PBS only

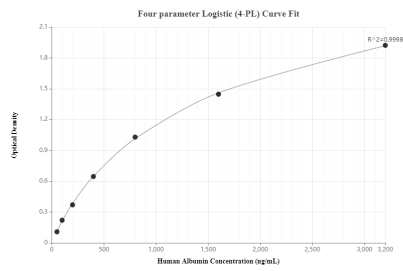
For technical support and original validation data for this product please contact:

T: 1 (888) 4PTGLAB (1-888-478-4522) (toll free in USA), or 1(312) 455-8498 (outside USA)

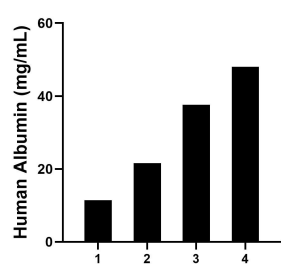
E: [proteintech@ptglab.com](mailto:proteintech@ptglab.com)  
W: [ptglab.com](http://ptglab.com)

This product is exclusively available under Proteintech Group brand and is not available to purchase from any other manufacturer.

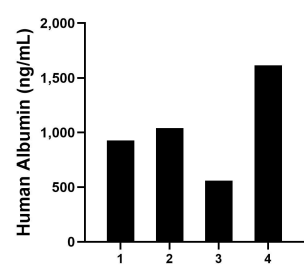
Selected Validation Data



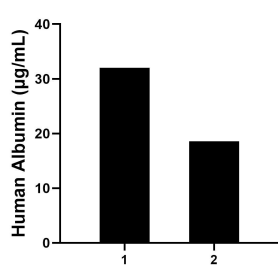
Sandwich ELISA standard curve of MP50031-1, Albumin Monoclonal Matched Antibody Pair, PBS Only. Capture antibody: 66051-2-PBS. Detection antibody: 66051-1-PBS. Standard: Ag9885. Range: 50-3200 ng/mL



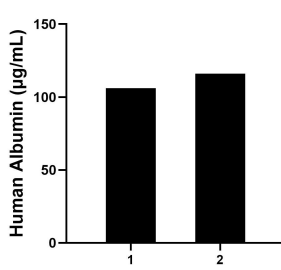
Serum of four individual healthy human donors was measured. The Albumin concentration of detected samples was determined to be 29.65 mg/mL with a range of 11.40-48.00 mg/mL



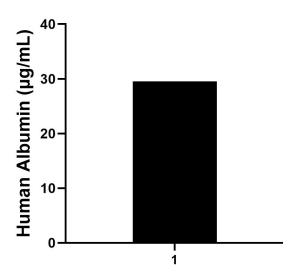
Urine of four individual healthy human donors was measured. The Albumin concentration of detected samples was determined to be 1,036.00 ng/mL with a range of 560.00-1,616.00 ng/mL



Saliva of two individual healthy human donors was measured. The Albumin concentrations of detected samples were determined to be 32.00 µg/mL and 18.60 µg/mL, respectively.



Human milk of two individual healthy human donors was measured. The Albumin concentrations of detected samples were determined to be 106.00 µg/mL and 116.00 µg/mL, respectively.



Human cerebrospinal fluid (CSF) of one individual human donors was measured. The Albumin concentration of detected samples was determined to be 29.50 µg/mL