

For Research Use Only

IL-6 Monoclonal Matched Antibody Pair, PBS Only



Catalog Number:MP50032-1

Capture Antibody Information

Catalog Number:
68659-1-PBS

Host:
Mouse

Isotype:
IgG1

Purification Method:
Protein G purification

Clone ID:
6C12C4

Reactivity:
human

Immunogen Catalog Number:
HZ-1019

Conjugate:
Unconjugated

Full name:
interleukin 6 (interferon, beta 2)

Gene ID:
3569

Detection Antibody Information

Catalog Number:
68659-2-PBS

Host:
Mouse

Isotype:
IgG1

Purification Method:
Protein G purification

Clone ID:
6C4B7

Reactivity:
human

GenBank:
Immunogen Catalog Number:

HZ-1019

Conjugate:
Unconjugated

Full name:
interleukin 6 (interferon, beta 2)

Gene ID:
3569

Applications

Tested Applications:
Cytometric bead array, Sandwich
ELISA

Range:
0.098-12.5 ng/mL (Cytometric Bead
Array)
7.8-500 pg/mL (Sandwich ELISA)

Recommended Dilutions:
It is recommended that this reagent
should be titrated in each testing
system to obtain optimal results.

Product Information

MP50032-1 targets IL-6 in immunoassays as a matched antibody pair. Validated in Cytometric bead array, Sandwich ELISA.

Capture antibody: IL-6 Monoclonal antibody, PBS Only (Capture) 68659-1-PBS (6C12C4). 100 µg. Concentration 1 mg/mL.

Detection antibody: IL-6 Monoclonal antibody, PBS Only (Detector) 68659-2-PBS (6C4B7). 100 µg. Concentration 1 mg/mL.

Unconjugated mouse monoclonal antibody pair in PBS only storage buffer at a concentration of 1 mg/mL, ready for conjugation.

Matched antibody pairs are designed for use in a variety of assays and platforms that require matched antibody pairs.

Antibody use should be optimized for each application and assay.

Storage

Storage:
Store at -80°C.
Storage buffer:
PBS only

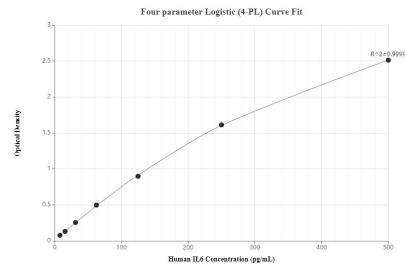
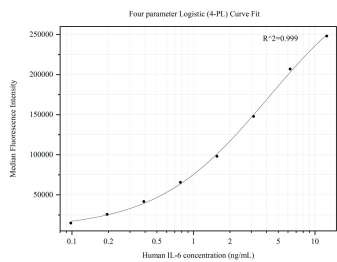
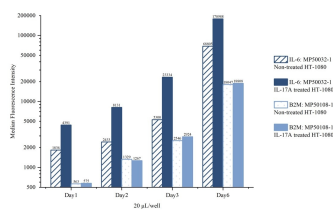
For technical support and original validation data for this product please contact:

T: 1 (888) 4PTGLAB (1-888-478-4522) (toll free
in USA), or 1(312) 455-8498 (outside USA)

E: proteintech@ptglab.com
W: ptglab.com

This product is exclusively available under Proteintech Group brand and is not available to purchase from any other manufacturer.

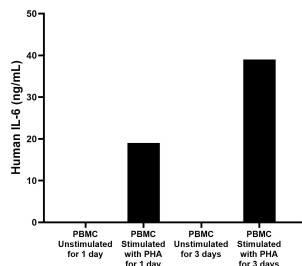
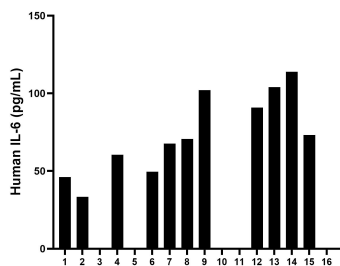
Selected Validation Data



Cytometric bead array of HT-1080 cells supernatant using MP50032-1, IL-6 Monoclonal Matched Antibody Pair, PBS Only. Capture antibody: 68659-1-PBS. Detection antibody: 68659-2-PBS. HT-1080 cells were inoculated into 6 well plate at 40000 cells/well followed by culture for 6 days in normal culture media or IL-17A (Cat.NO. HZ-1113, 40 ng/mL) containing media. 20 μ L of the supernatant from day 1, 2, 3 and day 6 was analyzed using MP50032-

Cytometric bead array standard curve of MP50032-1, IL-6 Monoclonal Matched Antibody Pair, PBS Only. Capture antibody: 68659-1-PBS. Detection antibody: 68659-2-PBS. Standard:HZ-1019. Range: 0.098-12.5 ng/mL.

Sandwich ELISA standard curve of MP50032-1, IL6 Monoclonal Matched Antibody Pair, PBS Only. Capture antibody: 68659-1-PBS. Detection antibody: 68659-2-PBS. Standard: HZ-1019. Range: 7.8-500 pg/mL.



Serum of sixteen individual healthy human donors was measured. The IL-6 concentration of detected samples was determined to be 73.8 pg/mL with a range of ND-113.9 pg/mL.

Human peripheral blood mononuclear cells (PBMC) were cultured unstimulated or stimulated with 10 μ g/mL PHA for 1 day or 3 days. For the PBMC supernatant cultured for 1 day, the mean IL-6 concentration was determined to be 0.1 ng/mL in unstimulated PBMC supernatant, 19.0 ng/mL in PHA stimulated PBMC supernatant. For the PBMC supernatant cultured for 3 days, the mean IL-6 concentration was determined to be 0.1 ng/mL in unstimulated PBMC supernatant,