

M-CSF Monoclonal Matched Antibody Pair, PBS Only

Catalog Number: **MP50033-1**

Capture Antibody Information

Catalog Number:
69033-1-PBS
Host:
Mouse
Isotype:
IgG1
Purification Method:
Protein G purification

Clone ID:
4C6C5
Reactivity:
human
Immunogen Catalog Number:
HZ-1192

Conjugate:
Unconjugated
Full name:
colony stimulating factor 1 (macrophage)
Gene ID:
1435
Affinity:
 $K_D = 8.48 \times 10^{-9} \text{M}$
 $K_{Off} = 4.75 \times 10^{-4} \text{M}$
 $K_{On} = 5.60 \times 10^4 \text{M}$

Detection Antibody Information

Catalog Number:
68662-1-PBS
Host:
Mouse
Isotype:
IgG1
Purification Method:
Protein G purification

Clone ID:
2C3B4
Reactivity:
human
GenBank:
Immunogen Catalog Number:
HZ-1192

Conjugate:
Unconjugated
Full name:
colony stimulating factor 1 (macrophage)
Gene ID:
1435
Affinity:
 $K_D = 9.64 \times 10^{-10} \text{M}$
 $K_{Off} = 8.75 \times 10^{-5} \text{M}$
 $K_{On} = 9.08 \times 10^4 \text{M}$

Applications

Tested Applications:
Sandwich ELISA

Range:
15.6-1000 pg/mL (Sandwich ELISA)

Recommended Dilutions:
It is recommended that this reagent should be titrated in each testing system to obtain optimal results.

Product Information

MP50033-1 targets M-CSF in immunoassays as a matched antibody pair. Validated in Sandwich ELISA.

Capture antibody: NeutraKine® M-CSF Monoclonal antibody, PBS Only (Capture) 69033-1-PBS (4C6C5). 100 µg. Concentration 1 mg/mL.

Detection antibody: M-CSF Monoclonal antibody, PBS Only (Detector) 68662-1-PBS (2C3B4). 100 µg. Concentration 1 mg/mL.

Unconjugated mouse monoclonal antibody pair in PBS only storage buffer at a concentration of 1 mg/mL, ready for conjugation.

Matched antibody pairs are designed for use in a variety of assays and platforms that require matched antibody pairs.

Antibody use should be optimized for each application and assay.

Storage

Storage:
Store at -80°C.
Storage buffer:
PBS only

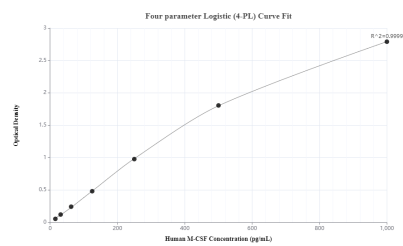
For technical support and original validation data for this product please contact:

T: 1 (888) 4PTGLAB (1-888-478-4522) (toll free in USA), or 1(312) 455-8498 (outside USA)

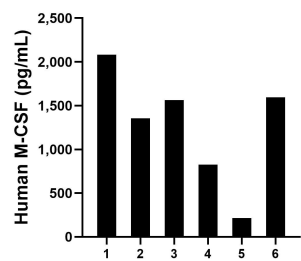
E: proteintech@ptglab.com
W: ptglab.com

This product is exclusively available under Proteintech Group brand and is not available to purchase from any other manufacturer.

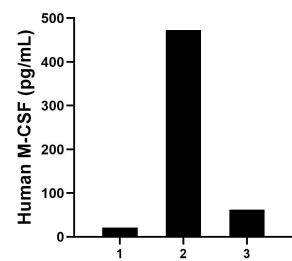
Selected Validation Data



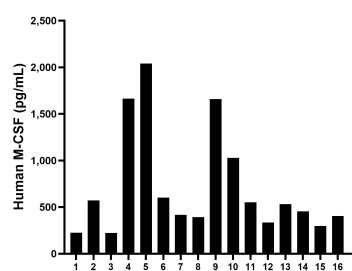
Sandwich ELISA standard curve of MP50033-1, MCSF Monoclonal Matched Antibody Pair - PBS Only. 69033-1-PBS was coated to a plate as the capture antibody and incubated with serial dilutions of standard HZ-1192. 68662-1-PBS was HRP conjugated as the detection antibody. Range: 15.6-1000 pg/mL.



Urine of six individual healthy human donors was measured. The M-CSF concentration of detected samples was determined to be 1,272.6 pg/mL with a range of 216.3-2,082.1 pg/mL.



Saliva of three individual healthy human donors was measured. The M-CSF concentration of detected samples was determined to be 185.5 pg/mL with a range of 21.3-473.0 pg/mL.



Serum of sixteen individual healthy human donors was measured. The M-CSF concentration of detected samples was determined to be 712.6 pg/mL with a range of 223.9-2,041.6 pg/mL.