

For Research Use Only

# HGF Monoclonal Matched Antibody Pair, PBS Only



Catalog Number:MP50034-1

## Capture Antibody Information

**Catalog Number:**  
68660-1-PBS  
**Host:**  
Mouse  
**Isotype:**  
IgG2a  
**Purification Method:**  
Protein A purification

**Clone ID:**  
2G2C3  
**Reactivity:**  
human  
**Immunogen Catalog Number:**  
HZ-1084

**Conjugate:**  
Unconjugated  
**Full name:**  
hepatocyte growth factor  
(hepapoietin A; scatter factor)  
**Gene ID:**  
3082

## Detection Antibody Information

**Catalog Number:**  
68660-2-PBS  
**Host:**  
Mouse  
**Isotype:**  
IgG1  
**Purification Method:**  
Protein G purification

**Clone ID:**  
2E5G2  
**Reactivity:**  
human  
**GenBank:**  
**Immunogen Catalog Number:**  
HZ-1084

**Conjugate:**  
Unconjugated  
**Full name:**  
hepatocyte growth factor  
(hepapoietin A; scatter factor)  
**Gene ID:**  
3082

## Applications

**Tested Applications:**  
Sandwich ELISA

**Range:**  
0.313-20 ng/mL (Sandwich ELISA)

**Recommended Dilutions:**  
It is recommended that this reagent should be titrated in each testing system to obtain optimal results.

## Product Information

MP50034-1 targets HGF in immunoassays as a matched antibody pair. Validated in Sandwich ELISA.

Capture antibody: HGF Monoclonal antibody, PBS Only (Capture) 68660-1-PBS (2G2C3). 100 µg. Concentration 1 mg/mL.

Detection antibody: HGF Monoclonal antibody, PBS Only (Detector) 68660-2-PBS (2E5G2). 100 µg. Concentration 1 mg/mL.

Unconjugated mouse monoclonal antibody pair in PBS only storage buffer at a concentration of 1 mg/mL, ready for conjugation.

Matched antibody pairs are designed for use in a variety of assays and platforms that require matched antibody pairs.

Antibody use should be optimized for each application and assay.

## Storage

**Storage:**  
Store at -80°C.  
**Storage buffer:**  
PBS only

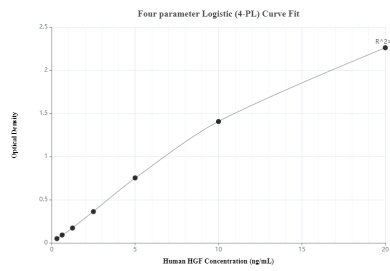
For technical support and original validation data for this product please contact:

T: 1 (888) 4PTGLAB (1-888-478-4522) (toll free in USA), or 1(312) 455-8498 (outside USA)

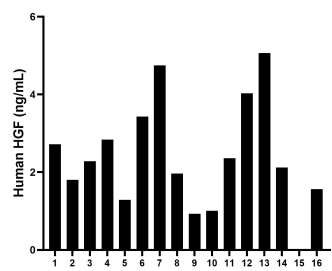
E: [proteintech@ptglab.com](mailto:proteintech@ptglab.com)  
W: [ptglab.com](http://ptglab.com)

This product is exclusively available under Proteintech Group brand and is not available to purchase from any other manufacturer.

## Selected Validation Data



Sandwich ELISA standard curve of MP50034-1, HGF Monoclonal Matched Antibody Pair - PBS only. 68660-1-PBS was coated to a plate as the capture antibody and incubated with serial dilutions of standard HZ-1084. 68660-2-PBS was HRP conjugated as the detection antibody. Range: 0.313-20 ng/mL.



Serum of sixteen individual healthy human donors was measured. The human HGF concentration of detected samples was determined to be 2.38 ng/mL with a range of ND - 4.75 ng/mL.