

Haptoglobin Monoclonal Matched Antibody Pair, PBS Only

Catalog Number: **MP50036-1**

Capture Antibody Information

Catalog Number:
68682-1-PBS
Host:
Mouse
Isotype:
IgG1
Purification Method:
Protein G purification

Clone ID:
1E1F4
Reactivity:
human
Immunogen Catalog Number:
Eg0445

Conjugate:
Unconjugated
Full name:
haptoglobin
Gene ID:
3240

Detection Antibody Information

Catalog Number:
68682-2-PBS
Host:
Mouse
Isotype:
IgG2b
Purification Method:
Protein A purification

Clone ID:
3B3G4
Reactivity:
human
GenBank:
BC121125
Immunogen Catalog Number:
Eg0445

Conjugate:
Unconjugated
Full name:
haptoglobin
Gene ID:
3240

Applications

Tested Applications:
Sandwich ELISA

Range:
62.5-4000 pg/mL (Sandwich ELISA)

Recommended Dilutions:
It is recommended that this reagent should be titrated in each testing system to obtain optimal results.

Product Information

MP50036-1 targets Haptoglobin in immunoassays as a matched antibody pair. Validated in Sandwich ELISA.

Capture antibody: HP Monoclonal antibody, PBS Only (Capture) 68682-1-PBS (1E1F4). 100 µg. Concentration 1 mg/mL.

Detection antibody: HP Monoclonal antibody, PBS Only (Detector) 68682-2-PBS (3B3G4). 100 µg. Concentration 1 mg/mL.

Unconjugated mouse monoclonal antibody pair in PBS only storage buffer at a concentration of 1 mg/mL, ready for conjugation.

Matched antibody pairs are designed for use in a variety of assays and platforms that require matched antibody pairs.

Antibody use should be optimized for each application and assay.

Storage

Storage:
Store at -80°C.
Storage buffer:
PBS only

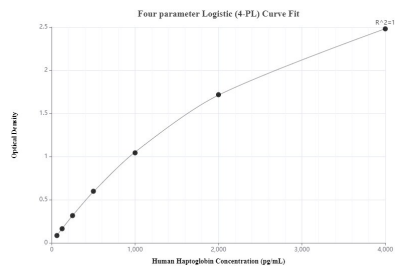
For technical support and original validation data for this product please contact:

T: 1 (888) 4PTGLAB (1-888-478-4522) (toll free in USA), or 1(312) 455-8498 (outside USA)

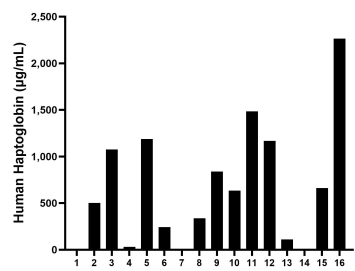
E: proteintech@ptglab.com
W: ptglab.com

This product is exclusively available under Proteintech Group brand and is not available to purchase from any other manufacturer.

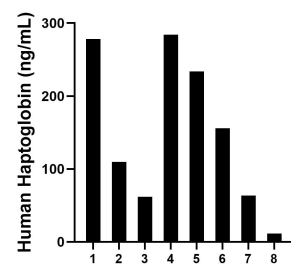
Selected Validation Data



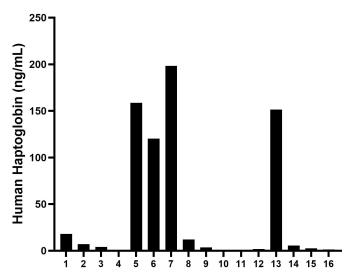
Sandwich ELISA standard curve of MP50036-1, Haptoglobin Monoclonal Matched Antibody Pair, PBS Only. Capture antibody: 68682-1-PBS. Detection antibody: 68682-2-PBS. Standard: Eg0445. Range: 62.5-4000 pg/mL.



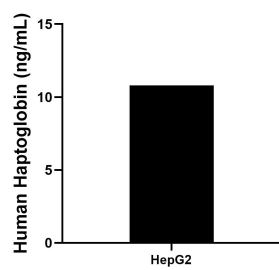
Serum of sixteen individual healthy human donors was measured. The Haptoglobin concentration of detected samples was determined to be 658.6 µg/mL with a range of 0.6 -2,265.0 µg/mL.



Saliva of eight individual healthy human donors was measured. The Haptoglobin concentration of detected samples was determined to be 149.8 ng/mL with a range of 11.6-284.1 ng/mL.



Urine of sixteen individual healthy human donors was measured. The Haptoglobin concentration of detected samples was determined to be 42.8 ng/mL with a range of 0.2-198.3 ng/mL.



HepG2 cells were cultured in serum-free DMEM supplemented with 2.5 mM L-glutamine, 100 U/mL penicillin, and 100 µg/mL streptomycin sulfate. An aliquot of the cell culture supernate was removed at 3 days, assayed for human Haptoglobin, and measured 10.8 ng/mL.