

beta NGF Monoclonal Matched Antibody Pair, PBS Only

Catalog Number: **MP50038-1**

Capture Antibody Information

Catalog Number:
68661-1-PBS

Host:
Mouse

Isotype:
IgG1

Purification Method:
Protein A purification

Clone ID:
5F2E4

Reactivity:
human

Immunogen Catalog Number:
HZ-1222

Conjugate:
Unconjugated

Full name:
nerve growth factor (beta polypeptide)

Gene ID:
4803

Affinity:
 $K_D = 2.69 \times 10^{-8} \text{M}$
 $K_{off} = 2.17 \times 10^{-4} \text{M}$
 $K_{on} = 8.06 \times 10^3 \text{M}$

Detection Antibody Information

Catalog Number:
68661-2-PBS

Host:
Mouse

Isotype:
IgG1

Purification Method:
Protein G purification

Clone ID:
1B2F6

Reactivity:
human

GenBank:

Immunogen Catalog Number:
HZ-1222

Conjugate:
Unconjugated

Full name:
nerve growth factor (beta polypeptide)

Gene ID:
4803

Affinity:
 $K_D = 3.37 \times 10^{-8} \text{M}$
 $K_{off} = 2.39 \times 10^{-4} \text{M}$
 $K_{on} = 7.10 \times 10^3 \text{M}$

Applications

Tested Applications:
Sandwich ELISA

Range:
3.9-250 pg/mL (Sandwich ELISA)

Recommended Dilutions:
It is recommended that this reagent should be titrated in each testing system to obtain optimal results.

Product Information

MP50038-1 targets beta NGF in immunoassays as a matched antibody pair. Validated in Sandwich ELISA.

Capture antibody: beta NGF Monoclonal antibody, PBS Only (Capture) 68661-1-PBS (5F2E4). 100 µg. Concentration 1 mg/mL.

Detection antibody: beta NGF Monoclonal antibody, PBS Only (Detector) 68661-2-PBS (1B2F6). 100 µg. Concentration 1 mg/mL.

Unconjugated mouse monoclonal antibody pair in PBS only storage buffer at a concentration of 1 mg/mL, ready for conjugation.

Matched antibody pairs are designed for use in a variety of assays and platforms that require matched antibody pairs.

Antibody use should be optimized for each application and assay.

Storage

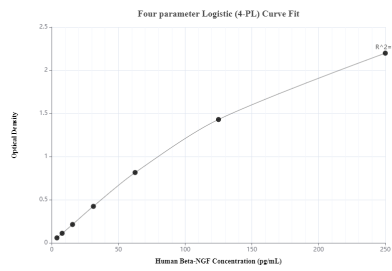
Storage:
Store at -80°C.

Storage buffer:
PBS only

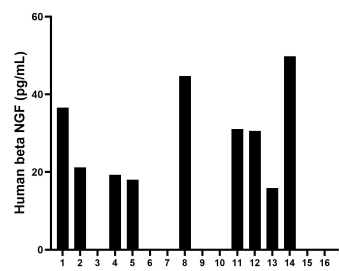
For technical support and original validation data for this product please contact:
 T: 1 (888) 4PTGLAB (1-888-478-4522) (toll free in USA), or 1(312) 455-8498 (outside USA)
 E: proteintech@ptglab.com
 W: ptglab.com

This product is exclusively available under Proteintech Group brand and is not available to purchase from any other manufacturer.

Selected Validation Data



Sandwich ELISA standard curve of MP50038-1, NGF Monoclonal Matched Antibody Pair - PBS only. 68661-1-PBS was coated to a plate as the capture antibody and incubated with serial dilutions of standard HZ-1222. 68661-2-PBS was biotinylated as the detection antibody. Range: 3.9-250 pg/mL.



Serum of sixteen individual healthy human donors was measured. The beta NGF concentration of detected samples was determined to be 16.7 pg/mL with a range of ND-49.8 pg/mL.