

# TNFR1/CD120a Monoclonal Matched Antibody Pair, PBS Only

Catalog Number: **MP50042-1**

## Capture Antibody Information

**Catalog Number:**  
68685-1-PBS  
**Host:**  
Mouse  
**Isotype:**  
IgG2a  
**Purification Method:**  
Protein A purification

**Clone ID:**  
1E3E4  
**Reactivity:**  
human  
**Immunogen Catalog Number:**  
Eg0531

**Conjugate:**  
Unconjugated  
**Full name:**  
tumor necrosis factor receptor superfamily, member 1A  
**Gene ID:**  
7132

## Detection Antibody Information

**Catalog Number:**  
68685-2-PBS  
**Host:**  
Mouse  
**Isotype:**  
IgG1  
**Purification Method:**  
Protein A purification

**Clone ID:**  
1D12C3  
**Reactivity:**  
human  
**GenBank:**  
BC010140  
**Immunogen Catalog Number:**  
Eg0531

**Conjugate:**  
Unconjugated  
**Full name:**  
tumor necrosis factor receptor superfamily, member 1A  
**Gene ID:**  
7132

## Applications

**Tested Applications:**  
Sandwich ELISA

**Range:**  
7.8-500 pg/mL (Sandwich ELISA)

**Recommended Dilutions:**  
It is recommended that this reagent should be titrated in each testing system to obtain optimal results.

## Product Information

MP50042-1 targets TNFR1/CD120a in immunoassays as a matched antibody pair. Validated in Sandwich ELISA.

Capture antibody: TNFR1/CD120a Monoclonal antibody, PBS Only (Capture) 68685-1-PBS (1E3E4). 100 µg. Concentration 1 mg/mL.

Detection antibody: TNFR1/CD120a Monoclonal antibody, PBS Only (Detector) 68685-2-PBS (1D12C3). 100 µg. Concentration 1 mg/mL.

Unconjugated mouse monoclonal antibody pair in PBS only storage buffer at a concentration of 1 mg/mL, ready for conjugation.

Matched antibody pairs are designed for use in a variety of assays and platforms that require matched antibody pairs.

Antibody use should be optimized for each application and assay.

## Storage

**Storage:**  
Store at -80°C.  
**Storage buffer:**  
PBS only

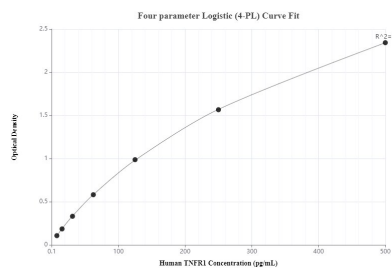
For technical support and original validation data for this product please contact:

T: 1 (888) 4PTGLAB (1-888-478-4522) (toll free in USA), or 1(312) 455-8498 (outside USA)

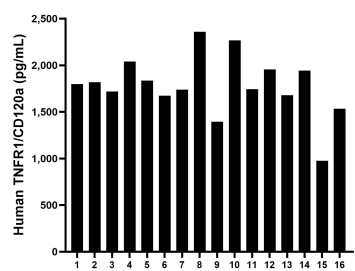
E: [proteintech@ptglab.com](mailto:proteintech@ptglab.com)  
W: [ptglab.com](http://ptglab.com)

**This product is exclusively available under Proteintech Group brand and is not available to purchase from any other manufacturer.**

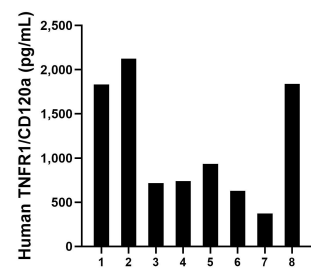
## Selected Validation Data



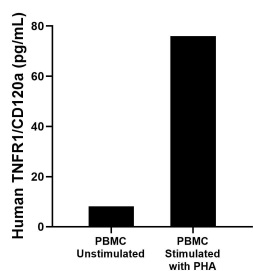
Sandwich ELISA standard curve of MP50042-1, TNFR1/CD120a Monoclonal Matched Antibody Pair, PBS Only. Capture antibody: 68685-1-PBS. Detection antibody: 68685-2-PBS. Standard: Eg0531. Range: 7.8-500 pg/mL



Serum of sixteen individual healthy human donors was measured. The TNFR1/CD120a concentration of detected samples was determined to be 1,779.9 pg/mL with a range of 976.2-2,358.9 pg/mL



Urine of eight individual healthy human donors was measured. The TNFR1/CD120a concentration of detected samples was determined to be 1,147.7 pg/mL with a range of 373.1-2,123.2 pg/mL



Human peripheral blood mononuclear cells (PBMC) were cultured unstimulated or stimulated with 10 µg/mL PHA for 3 days. The mean TNFR1/CD120a concentration was determined to be 8.1 pg/mL in unstimulated PBMC supernatant, 76.0 pg/mL in PHA stimulated PBMC supernatant.