

For Research Use Only

# CD138/Syndecan-1 Monoclonal Matched Antibody Pair, PBS Only



Catalog Number:MP50044-1

## Capture Antibody Information

Catalog Number:  
60185-1-PBS

Host:  
Mouse

Isotype:  
IgG1

Purification Method:  
Protein G purification

Clone ID:  
1B6A2

Reactivity:  
human

Immunogen Catalog Number:  
Ag0823

Conjugate:  
Unconjugated

Full name:  
syndecan 1

Gene ID:  
6382

## Detection Antibody Information

Catalog Number:  
67155-1-PBS

Host:  
Mouse

Isotype:  
IgG2a

Purification Method:  
Protein A purification

Clone ID:  
4F3A8

Reactivity:  
human

GenBank:  
BC008765

Immunogen Catalog Number:  
Ag0823

Conjugate:  
Unconjugated

Full name:  
syndecan 1

Gene ID:  
6382

## Applications

Tested Applications:  
Sandwich ELISA

Range:  
0.188-12 ng/mL (Sandwich ELISA)

Recommended Dilutions:  
It is recommended that this reagent should be titrated in each testing system to obtain optimal results.

## Product Information

MP50044-1 targets CD138/Syndecan-1 in immunoassays as a matched antibody pair. Validated in Sandwich ELISA.

Capture antibody: CD138/Syndecan-1 Monoclonal antibody, PBS Only (Capture) 60185-1-PBS (1B6A2). 100 µg. Concentration 1 mg/mL.

Detection antibody: CD138/Syndecan-1 Monoclonal antibody, PBS Only (Detector) 67155-1-PBS (4F3A8). 100 µg. Concentration 1 mg/mL.

Unconjugated mouse monoclonal antibody pair in PBS only storage buffer at a concentration of 1 mg/mL, ready for conjugation.

Matched antibody pairs are designed for use in a variety of assays and platforms that require matched antibody pairs.

Antibody use should be optimized for each application and assay.

## Storage

Storage:  
Store at -80°C.  
Storage buffer:  
PBS only

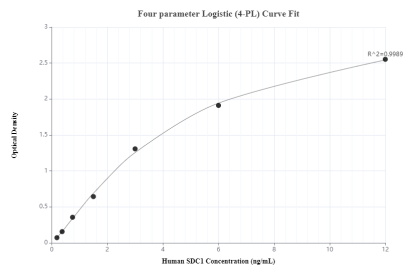
For technical support and original validation data for this product please contact:

T: 1 (888) 4PTGLAB (1-888-478-4522) (toll free in USA), or 1(312) 455-8498 (outside USA)

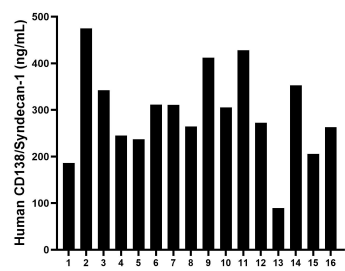
E: [proteintech@ptglab.com](mailto:proteintech@ptglab.com)  
W: [ptglab.com](http://ptglab.com)

This product is exclusively available under Proteintech Group brand and is not available to purchase from any other manufacturer.

## Selected Validation Data



Sandwich ELISA standard curve of MP50044-1, SDC1,CD138 Monoclonal Matched Antibody Pair, PBS Only. Capture antibody: 60185-1-PBS. Detection antibody: 67155-1-PBS. Standard: Ag17733. Range: 0.188-12 ng/mL



Plasma of sixteen individual healthy human donors was measured. The CD138/Syndecan-1 concentration of detected samples was determined to be 293.79 ng/mL with a range of 89.65-474.60 ng/mL