

For Research Use Only

MMP1 Monoclonal Matched Antibody Pair, PBS Only



Catalog Number:MP50047-1

Capture Antibody Information

Catalog Number:
68705-1-PBS
Host:
Mouse
Isotype:
IgG1
Purification Method:
Protein G Magarose purification

Clone ID:
1E11C5
Reactivity:
human
Immunogen Catalog Number:
Ag0547

Conjugate:
Unconjugated
Full name:
matrix metalloproteinase 1 (interstitial collagenase)
Gene ID:
4312

Detection Antibody Information

Catalog Number:
68706-1-PBS
Host:
Mouse
Isotype:
IgG2a
Purification Method:
Protein A purification

Clone ID:
1H9E12
Reactivity:
human
GenBank:
BC013875
Immunogen Catalog Number:
Ag0547

Conjugate:
Unconjugated
Full name:
matrix metalloproteinase 1 (interstitial collagenase)
Gene ID:
4312

Applications

Tested Applications:
Sandwich ELISA

Range:
78.1-5000 pg/mL (Sandwich ELISA)

Recommended Dilutions:
It is recommended that this reagent should be titrated in each testing system to obtain optimal results.

Product Information

MP50047-1 targets MMP1 in immunoassays as a matched antibody pair. Validated in Sandwich ELISA.

Capture antibody: MMP1 Monoclonal antibody, PBS Only (Capture) 68705-1-PBS (1E11C5). 100 µg. Concentration 1 mg/mL.

Detection antibody: MMP1 Monoclonal antibody, PBS Only (Detector) 68706-1-PBS (1H9E12). 100 µg. Concentration 1 mg/mL.

Unconjugated mouse monoclonal antibody pair in PBS only storage buffer at a concentration of 1 mg/mL, ready for conjugation.

Matched antibody pairs are designed for use in a variety of assays and platforms that require matched antibody pairs.

Antibody use should be optimized for each application and assay.

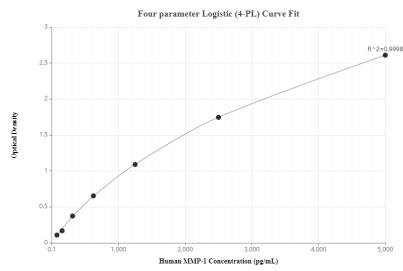
Storage

Storage:
Store at -80°C.
Storage buffer:
PBS only

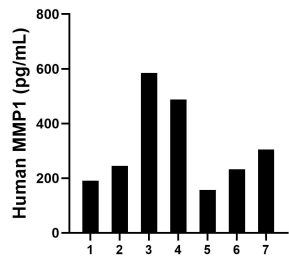
For technical support and original validation data for this product please contact:
T: 1 (888) 4PTGLAB (1-888-478-4522) (toll free in USA), or 1(312) 455-8498 (outside USA)
E: proteintech@ptglab.com
W: ptglab.com

This product is exclusively available under Proteintech Group brand and is not available to purchase from any other manufacturer.

Selected Validation Data



Sandwich ELISA standard curve of MP50047-1, MMP1 Monoclonal Matched Antibody Pair, PBS Only. Capture antibody: 68705-1-PBS. Detection antibody: 68706-1-PBS. Standard: Eg0527. Range: 78.1-5000 pg/mL.



Serum of seven individual healthy human donors was measured. The MMP1 concentration of detected samples was determined to be 314.7 pg/mL with a range of 157.5-584.8 pg/mL.