

DPP4/CD26 Monoclonal Matched Antibody Pair, PBS Only

Catalog Number: **MP50051-1**

Capture Antibody Information

Catalog Number:
68383-1-PBS

Host:
Mouse

Isotype:
IgG1

Purification Method:
Protein G purification

Clone ID:
2G6D11

Reactivity:
human, pig, rabbit

Immunogen Catalog Number:
Eg0157

Conjugate:
Unconjugated

Full name:
dipeptidyl-peptidase 4

Gene ID:
1803

Detection Antibody Information

Catalog Number:
68383-2-PBS

Host:
Mouse

Isotype:
IgG2a

Purification Method:
Protein A purification

Clone ID:
1G3B4

Reactivity:
human

GenBank:
BC013329

Immunogen Catalog Number:
Eg0157

Conjugate:
Unconjugated

Full name:
dipeptidyl-peptidase 4

Gene ID:
1803

Applications

Tested Applications:
Sandwich ELISA

Range:
0.313-20 ng/mL (Sandwich ELISA)

Recommended Dilutions:
It is recommended that this reagent should be titrated in each testing system to obtain optimal results.

Product Information

MP50051-1 targets DPP4/CD26 in immunoassays as a matched antibody pair. Validated in Sandwich ELISA.

Capture antibody: DPP4/CD26 Monoclonal antibody, PBS Only (Capture) 68383-1-PBS (2G6D11). 100 µg. Concentration 1 mg/mL.

Detection antibody: DPP4/CD26 Monoclonal antibody, PBS Only (Detector) 68383-2-PBS (1G3B4). 100 µg. Concentration 1 mg/mL.

Unconjugated mouse monoclonal antibody pair in PBS only storage buffer at a concentration of 1 mg/mL, ready for conjugation.

Matched antibody pairs are designed for use in a variety of assays and platforms that require matched antibody pairs.

Antibody use should be optimized for each application and assay.

Storage

Storage:
Store at -80°C.
Storage buffer:
PBS only

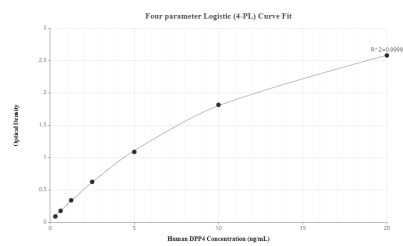
For technical support and original validation data for this product please contact:

T: 1 (888) 4PTGLAB (1-888-478-4522) (toll free in USA), or 1(312) 455-8498 (outside USA)

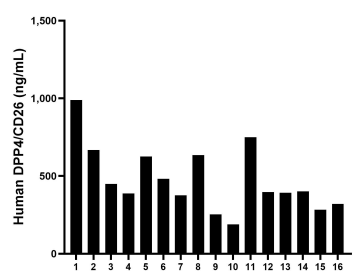
E: proteintech@ptglab.com
W: ptglab.com

This product is exclusively available under Proteintech Group brand and is not available to purchase from any other manufacturer.

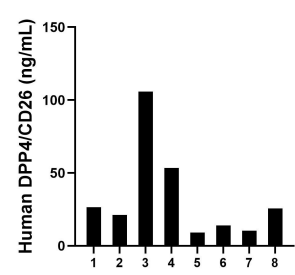
Selected Validation Data



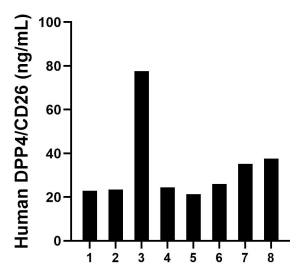
Sandwich ELISA standard curve of MP50051-1, DPP4 Monoclonal Matched Antibody Pair, PBS Only. Capture antibody: 68383-1-PBS. Detection antibody: 68383-2-PBS. Standard: Eg0157. Range: 0.313-20 ng/mL



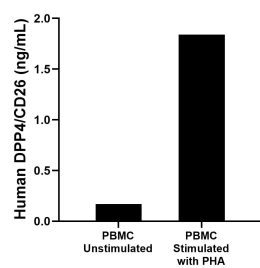
Serum of sixteen individual healthy human donors was measured. The DPP4/CD26 concentration of detected samples was determined to be 475.10 ng/mL with a range of 189.59-990.11 ng/mL



Urine of eight individual healthy human donors was measured. The DPP4/CD26 concentration of detected samples was determined to be 33.23 ng/mL with a range of 9.07-105.84 ng/mL



Saliva of eight individual healthy human donors was measured. The DPP4/CD26 concentration of detected samples was determined to be 33.57 ng/mL with a range of 21.27-77.69 ng/mL



Human peripheral blood mononuclear cells (PBMC) were cultured unstimulated or stimulated with 10 μ g/mL PHA for 5 days. The mean DPP4/CD26 concentration was determined to be 0.17 ng/mL in unstimulated PBMC supernatant, 1.84 ng/mL in PHA stimulated PBMC supernatant.