

Thrombopoietin Monoclonal Matched Antibody Pair, PBS Only

Catalog Number: **MP50053-1**

Capture Antibody Information

| | | |
|---|---|--|
| Catalog Number: 68672-1-PBS | Clone ID: 1B7D1 | Conjugate: Unconjugated |
| Host: Mouse | Reactivity: human | Full name: thrombopoietin |
| Isotype: IgG2b | Immunogen Catalog Number: HZ-1248 | Gene ID: 7066 |
| Purification Method: Protein A purification | | Affinity: $K_D = 2.84 \times 10^{-9}M$ $K_{Off} = 3.32 \times 10^{-4}M$ $K_{On} = 1.17 \times 10^5M$ |

Detection Antibody Information

| | | |
|---|-----------------------------|--|
| Catalog Number: 68672-2-PBS | Clone ID: 1A8G2 | Conjugate: Unconjugated |
| Host: Mouse | Reactivity: human | Full name: thrombopoietin |
| Isotype: IgG1 | GenBank: HZ-1248 | Gene ID: 7066 |
| Purification Method: Protein G purification | | Affinity: $K_D = 1.85 \times 10^{-9}M$ $K_{Off} = 3.08 \times 10^{-4}M$ $K_{On} = 1.67 \times 10^5M$ |

Applications

| | | |
|---|---|---|
| Tested Applications: Sandwich ELISA | Range: 15.6-1000 pg/mL (Sandwich ELISA) | Recommended Dilutions: It is recommended that this reagent should be titrated in each testing system to obtain optimal results. |
|---|---|---|

Product Information

MP50053-1 targets Thrombopoietin in immunoassays as a matched antibody pair. Validated in Sandwich ELISA.

Capture antibody: Thrombopoietin Monoclonal antibody, PBS Only (Capture) 68672-1-PBS (1B7D1). 100 µg. Concentration 1 mg/mL.

Detection antibody: Thrombopoietin Monoclonal antibody, PBS Only (Detector) 68672-2-PBS (1A8G2). 100 µg. Concentration 1 mg/mL.

Unconjugated mouse monoclonal antibody pair in PBS only storage buffer at a concentration of 1 mg/mL, ready for conjugation.

Matched antibody pairs are designed for use in a variety of assays and platforms that require matched antibody pairs.

Antibody use should be optimized for each application and assay.

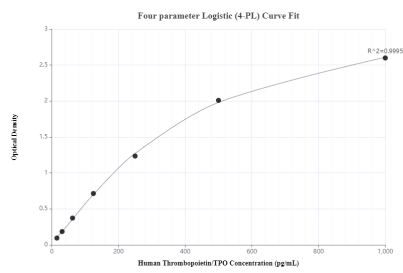
Storage

Storage:
Store at -80°C.
Storage buffer:
PBS only

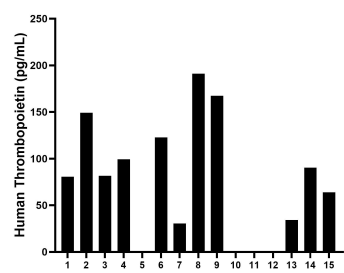
For technical support and original validation data for this product please contact:
 T: 1 (888) 4PTGLAB (1-888-478-4522) (toll free in USA), or 1(312) 455-8498 (outside USA)
 E: proteintech@ptglab.com
 W: ptglab.com

This product is exclusively available under Proteintech Group brand and is not available to purchase from any other manufacturer.

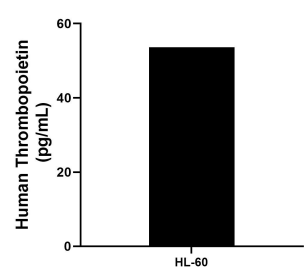
Selected Validation Data



Sandwich ELISA standard curve of MP50053-1, THPO Monoclonal Matched Antibody Pair, PBS Only. 68672-1-PBS was coated to a plate as the capture antibody and incubated with serial dilutions of standard HZ-1248. 68672-2-PBS was HRP conjugated as detection antibody. Range: 15.6-1000 pg/mL



Serum of sixteen individual healthy human donors was measured. The human Thrombopoietin concentration of detected samples was determined to be 100.9 pg/mL with a range of ND - 191.1 pg/mL



HL-60 were cultured in DMEM supplemented with 10% fetal bovine serum, 2.5 mM L-glutamine, 100 U/mL penicillin, and 100 µg/mL streptomycin sulfate. An aliquot of the cell culture supernate was removed, assayed for human Thrombopoietin, and measured 53.6 pg/mL